

JUMEIRAH
MARSA AL ARAB
DUBAI



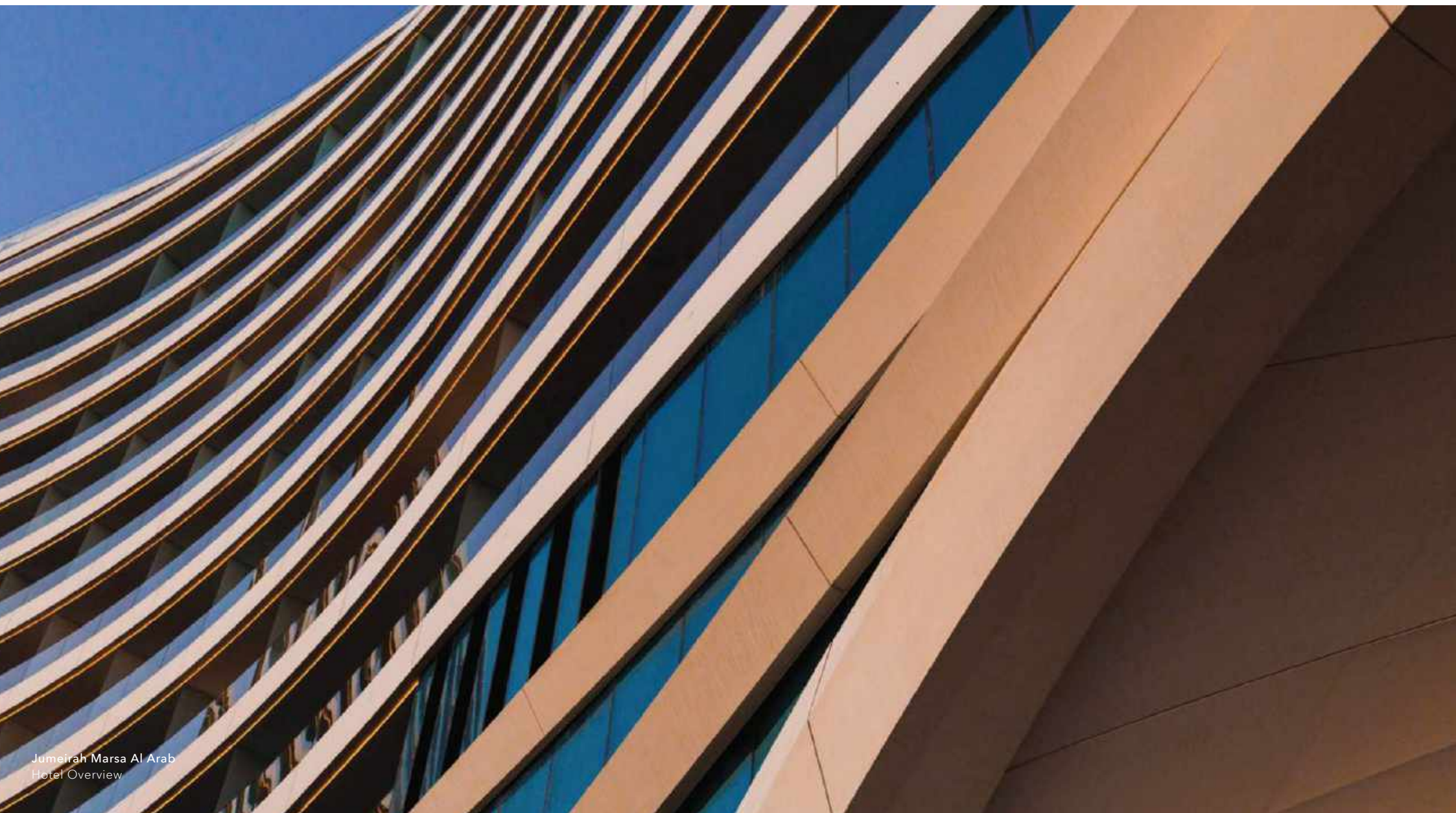
A playground for horizon-seekers

Hotel Overview	03
Rooms & Suites	07
Residences' Overview	10
Dining & Entertainment	11
Beach & Pool Bars	14
Wellness & Leisure	15
Jumeirah Marsa Al Arab In Numbers	17
Resort Map	18



Introducing Jumeirah Marsa Al Arab

A new dawn of otherworldly dining, wellness and entertainment in Dubai



Designed by Shaun Killa, renowned for his flair for statement architecture including the Museum of the Future and his collaboration with British architect Tom Wright in Jumeirah Burj Al Arab timeless design, Jumeirah Marsa Al Arab marks a distinctive new generation of resorts, hotels and residences for the Dubai-born brand.



Rising from Dubai's exclusive golden peninsula, gently lapped by azure waves, Jumeirah Marsa Al Arab's alluring design is set to make it one of Dubai's most glamorous addresses. An evocative world of wellness, extraordinary cuisine and mixology, all infused with the charm and warmth of Arabian hospitality awaits.



Encapsulating The Allure Of Life By The Water

Inimitable glamour and meticulous craftsmanship carry you into ethereal spaces designed for relaxation, inspired by the world's ultra-yachts. Glide past infinite views of Jumeirah Burj Al Arab iconic silhouette on Dubai's most exclusive private beach or gaze out across the extraordinary city.

The resort's sleek rooms and suites can accommodate up to two adults and two children. With extensive terraces combining indoor and outdoor living Jumeirah Marsa Al Arab's rooms are ideal for families and couples alike.





Rooms

The allure of Italy's iconic Riva boat - the Jaguar of the sea and the go-to for 60s water ski glamour - draws you into this stylish space, with extraordinary views to match. Rooms are starting from 60sqm with private terrace.



Suites

Borrowing bold design cues from the handsome Speedster, this space rewards long journeys with a rejuvenating stay, styled with sporty lines and energising interiors. Suites are starting from 120sqm with private terrace.



Presidential Suite

Drift into holiday mode aboard the master of the sea. Our powerful two-bedroom Presidential suite is designed with meticulous detailing and the palatial glamour of a superyacht. Featuring a plunge pool on the spacious terrace, this suite is a promise of unforgettable nautical escape. Presidential suite is 310sqm with 257sqm terrace.



Royal Suite

The refined interiors of the one-bedroom Royal suite create the ultimate escape within our sumptuous palace, which seemingly floats on the water. This suite with plunge pool and grand terrace boasts views of the Arabian Sea, and as its name suggests, is worthy of royalty. Royal suite is 355sqm with 310sqm terrace.



Pearl Suite

The two-bedroom Pearl suite is the epitome of glamorous travel, wrapped in a panoramic terrace with infinity views overlooking Dubai's sparkling shoreline from sunrise to sunset. With a state-of-the-art private kitchen, this splendid suite is the most desired address for high-end events and gatherings for up to 80 people. Pearl Suite is 611sqm with 459sqm private terrace.



Chic Coastal Living

Jumeirah Marsa Al Arab features 82 one-, two- and three-bedroom residences, which all enjoy elevated four-metre-high ceilings, with many rooms featuring floor-to-ceiling balcony windows, creating a sense of grandeur and space. Perfect for families and group of friends, all residences are equipped with a private kitchen. The resort's lavish landscape includes glittering waters, beautiful terraces and lush gardens, complete with private cabana

areas and pavilions. Residences feature a spectacularly designed pool, as well as a restaurant.

- One-bedroom residences starting from 95sqm with private terrace
- Two-bedroom residences starting from 170sqm with private terrace
- Three-bedroom residences starting from 320sqm with private terrace



Tantalising Gastronomy

Feast on extraordinary cuisine in divine spaces with 11 restaurants and 4 destination bars, each crafted by internationally acclaimed designers. Unite, celebrate or simply enjoy a moment of peaceful reflection by the water.



As refreshing as the breeze at the front of a ship, **The Fore** is an uplifting space to begin your day with a delicious breakfast, cooked just as you like it. As night falls, however, four oceanfront restaurants emerge, each with an individual culinary story. **Mirabelle** crafts regional dishes inspired by the azure coastline of the Mediterranean; **Madame Li** offers a refined take on Asian fusion cuisine; **Umi Kei** serves the finest Japanese delicacies, while **Bombay Club's** decadent interiors set the scene for sensational Indian cuisine. All are housed under one roof, connected by four alfresco terraces and a show-stopping central bar, reminiscent of a floating pearl.



Breeze into **Iliana**, a Mykonos-inspired beachfront retreat where Mediterranean style and mystique meet breathtaking views. Adjacent to the spa, **Orizonta** serves a blend of Eastern Mediterranean dishes against the stunning backdrop of Dubai's sparkling shoreline. **Rialto**, a grand Venetian restaurant and bar, is a modern-day classic that captures the spirit and splendor of fine Italian cuisine. By the Adult Pool, **Kinugawa** elevates Japanese dining with inventive dishes and a curated cocktail bar.

The Cullinan is a refined steakhouse offering gourmet dining and classic service, while Kira showcases a fusion of Japanese grace and Mediterranean flair. Meanwhile, **Commodore Club**, located in Jumeirah Residences Marsa Al Arab, presents a modern and elevated take on international comfort food.





Jumeirah Marsa Al Arab
Beach & Pool Bars

Holistic Wellness

Interiors drift effortlessly into the outdoors, helping you slip into a state of blissful relaxation at Talise, with floor-to-ceiling views over the stunning Jumeirah Burj Al Arab.





Bathed with natural light, Talise offers awe-inspiring views of Jumeirah Burj Al Arab, which rises majestically from the sparkling Arabian Gulf. Set over three floors - one of which is dedicated to women - the spa has 13 treatment suites, each of which extend to a private terrace cooled by a soft sea breeze. Sunloungers invite you to linger and marvel at the panorama. For an exhilarating workout, plunge into the stunning 20-metre pool or push yourself to your limits in the Fitness Studio. When you've finished training, retreat to the sauna, steam room or mixed hammam to rejuvenate your body and mind.



Marsa Al Arab In Numbers

300 rooms and 86 suites

82 serviced residences overlooking the sparkling Arabian Gulf

11 world-class dining concepts and four destination bars

82 berth super-yacht marina

Connected Marina Promenade adorned with cafes and restaurants

Five pools and a private beach

13 spa treatment suites

Fitness studio, mixed hammam, sauna and steam bath

Barber salon and hairdresser

Jumeirah Circle Family Club welcomes guests aged 3-10.





1 Jumeirah Street

2 Main Entrance - Marsa Al Arab

3 Access to Basement Parking

4 Entrance Gate House No.1

5 Residence's A2 Drop-Off

6 Commodore Club Pool

7 Commodore Club Pool Bar

8 Hotel Drop-Off

9 Marina Gatehouse

10 Dining Terraces

11 Penthouse Drop-Off

12 Access to Penthouse Basement

13 Access to Resort Amenities

14 Iliana Pool Arrival

15 Iliana Pool & Cabanas

16 Iliana Restaurant

17 Resort Pool

18 Guest Buggy Route

19 Guest Buggy Tunnel

20 Resort Pool Showers

21 Kinugawa Pool

22 Kinugawa Pool Arrival

23 Kinugawa

24 Jumeirah Marsa Al Arab Beach

25 Beach Kitchen

26 Resort Beach Bar

27 Resort Pool Main Arrival Showers

28 Restaurants & Bars Drop Off

29 Iliana Beach Bar

30 Iliana Beach

31 Cascade Water Feature

32 Entrance Gate House No.2

33 Golf Cart Access to Jumeirah Beach Hotel



JUMEIRAH
MARSA AL ARAB

jumeirah.com

© Jumeirah International LLC 2025

All rights reserved. No part of this publication may be reproduced in any material form (including photocopying or storage in any medium by electronic means) without the written permission of Jumeirah Hotels & Resorts.