



HARMONY eROCK

Ierapetra — Crete — Greece

Fact Sheet

July 2023

USEARCHITECTURE
ARCHITECTURAL DESIGN AND CONSTRUCTION SUPERVISION
www.usearchitecture.gr



Table of Contents

~

Intro

The Location
The Resort
The Concept - Inspiration

A

Accommodation

Standard Double Rooms
Superior Double Rooms - Private Pool
Standard Triple Rooms
Superior Triple Rooms - Private Pool
Suites
Superior Suites - Private Pool

B

Dining & Drinking

Main Restaurant
Italian A la Carte Restaurant

~

Lobby Bar
Pool Bar

C

Pools

Main Pool
Private Pool
Jacuzzi Pool

D

Activities

Wellness Spa
Gym
Selfie-Spot
Yoga Pavillion
Multisports Court

E

Facilities

Main Entrance
Reception
Lounge Area
Dry Mediterranean Garden

~

~
Intro



Harmony eRock Hotel



Harmony eRock Hotel is a 4 star hospitality complex located in the area of Agia Fotia, in an idyllic location of rocky landscape, overlooking the bay and at 650m from the beach. Situated at a secluded location in the virgin landscape of Southern Crete, the hotel is ideal for those seeking relaxation and enjoying the splendour of nature. Consisting of a total of 89 rooms of 6 types and various common indoor and outdoor facilities, this freshly renovated hotel is an ideal summer retreat.

Inspired by the mediterranean landscape and local handcraft traditions, the hotel offers an environment of discreet luxury, embedded in the context. Choreographed earthy colour palettes and materials are juxtaposed with dark blue, echoing the South Cretan Sea and cretan ceramic art, effectively bringing

together land and sea, novelty and tradition.

The rooms are spacious and can accommodate 2,3 or 4 persons depending on the type. Room types allow guests to choose between a private terrace or pool, while special consideration is taken regarding guests with restricted mobility, with 5 adequately designed rooms.

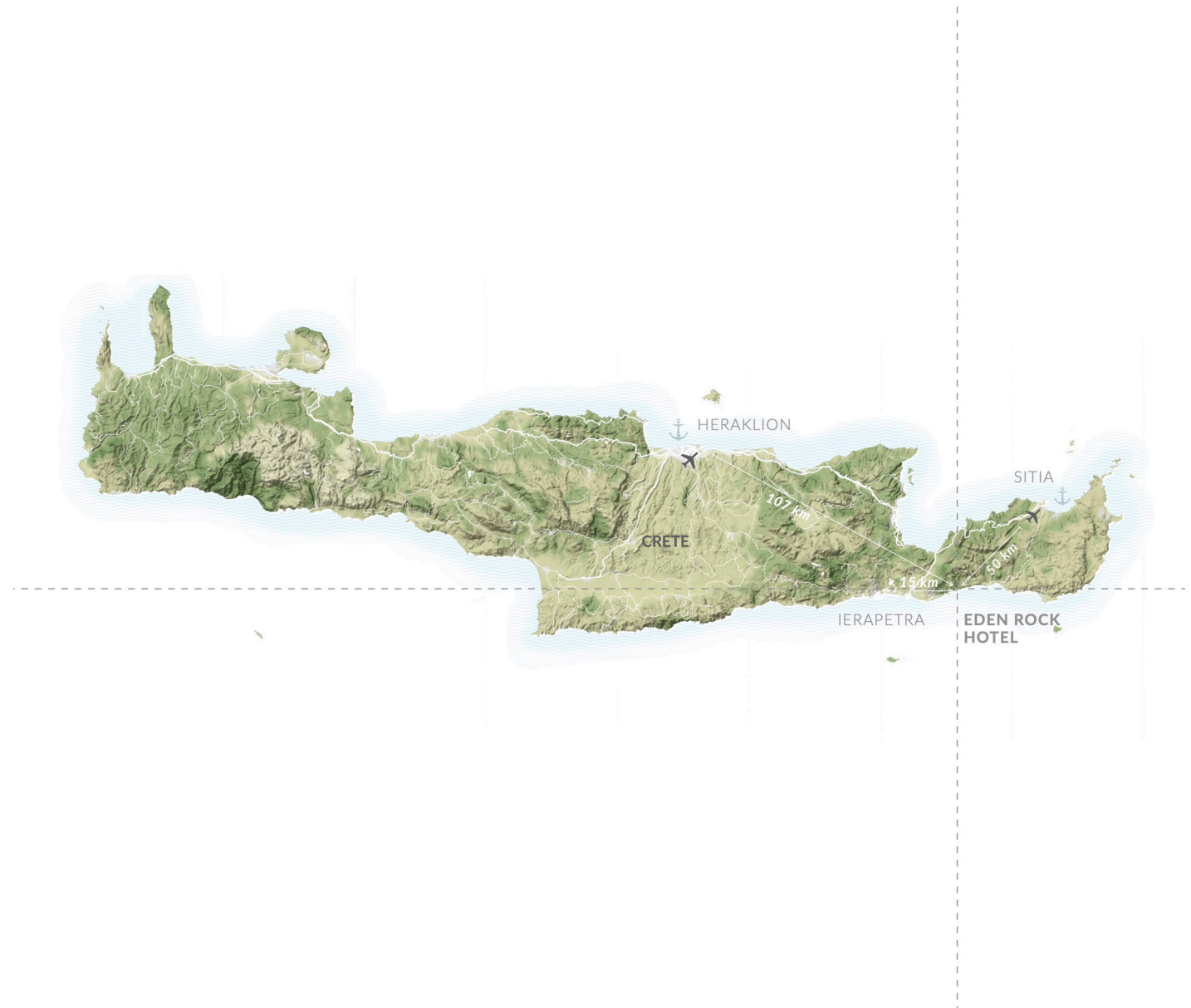
Tailored for an unforgettable experience, the hotel also features a wide range of restaurants and bars to suit any taste, including 1 Main Restaurant and 1 A la carte restaurant as well as 2 bars (Lobby Bar & Pool Bar).

~
The Location

35°02'67.1"N 25°87'48.6"E

Ierapetra, Crete

Harmony eRock Hotel is located in the area of 'Agia Fotia', in a lightly built-up area, only 650m from the Agia Fotia beach. It is located at a distance of 15 km from the city of Ierapetra, 50 km from Sitia airport and 107 km from Heraklion International airport. A key feature of the hotel is its location on a steep and rocky slope, overlooking the surrounding mountainous landscape and the South Cretan Sea, offering a unique opportunity to enjoy the splendour of nature.



The Resort

A-Accommodation

- A1 Standard Double
- A2 Superior Double - Private Pool
- A3 Standard Triple
- A4 Superior Triple - Private Pool
- A5 Suites
- A6 Superior Suites - Private Pool

B-Drinking & Dining

- B1 Main Restaurant
- B2 Italian Restaurant
- B3 Lobby Bar
- B4 Pool Bar
- B5 Shisha & Cocktail Bar

C-Pools

- C1 Main Pool
- C2 Private Pools
- C3 Jacuzzi Pools

D-Activities

- D1 Wellness Spa / Gym
- D2 Yoga Pavillion
- D3 Multisports Court

E-Facilities

- E1 Entrance
- E2 Reception
- E3 Selfie Spot
- E4 Dry Mediterranean Garden
- E5 Parking



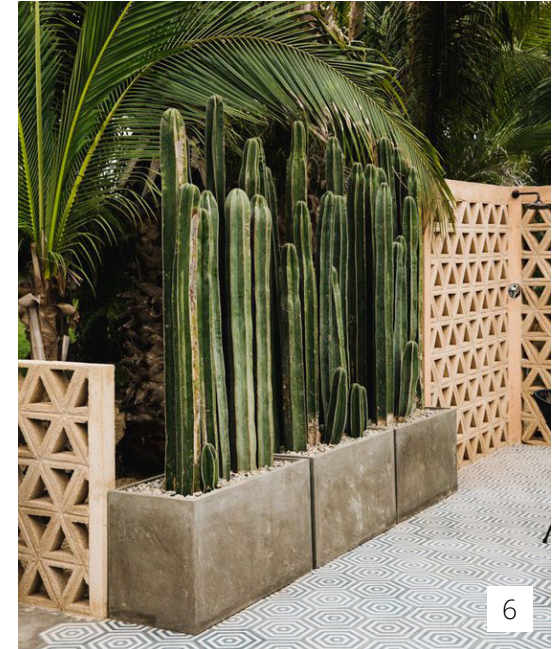
Inspiration ~ OUTDOORS



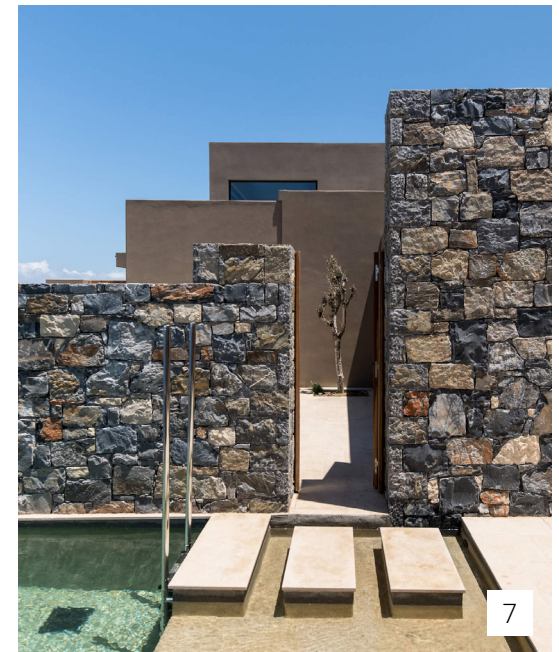
inner courtyards
private verandas
dry gardens



Inspiration ~ MATERIALS



textured plaster
rough wood finishes
breeze blocks
local stone



Inspiration ~ POOLS



natural materials

lush vegetation



Inspiration ~ ROOMS



11



12

wood
textured plaster
private pools



13

A

Accommodation

A

Accommodation - A1 Standard Double

A1. Standard Double Rooms - 20m²

Number of Rooms: 29

All Standard Double Rooms in Harmony eRock Hotel feature a spacious layout, suitable for two (2) people. Freshly renovated in contemporary aesthetics and situated at the core of the hotel, this is the perfect choice for a pleasant stay.

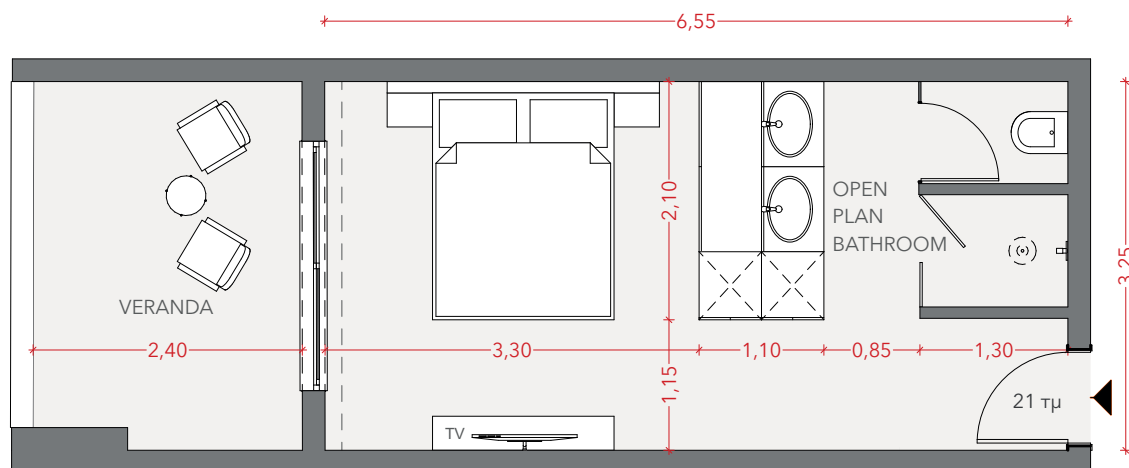
The room is equipped with a double bed with side tables and lighting (both reading and pendant lights), a closet, a desk and an armchair. It also features a spacious wardrobe, a mini bar, storage space and a safe. The bathroom offers a colourful touch in the interior, designed as either a separate space or in an open-plan layout.

The room also expands outdoors on a veranda with sea or garden view.

The accommodation is ideal for 2 people.

All **Standard Double Rooms** are also equipped with:

- Bathroom amenities
- Mini Fridge
- In-room Safe
- Hairdryer
- Air Conditioning (individually controlled)
- smart TV
- Laundry Service (at an extra charge)
- Tea & Coffee facilities
- Free WiFi access
- Iron & Ironing Board (upon request)
- Pillow Menu



A

Accommodation - A2 Superior Double

A2. Superior Double Rooms - 20-29m²

Number of Rooms: 28

All Superior Double Rooms in Harmony eRock Hotel feature a spacious layout, suitable for two (2) people. The room is equipped with a double bed with side tables and lighting (both reading and pendant lights), a closet, a desk and an armchair. Designed in an open-plan layout, the bathroom offers a colourful touch in the interior. It is equipped with a double sink and separate walk-in shower and toilet cabins. It also features a spacious wardrobe, a mini bar, storage space and a safe, while the room also expands outdoors on a ter-

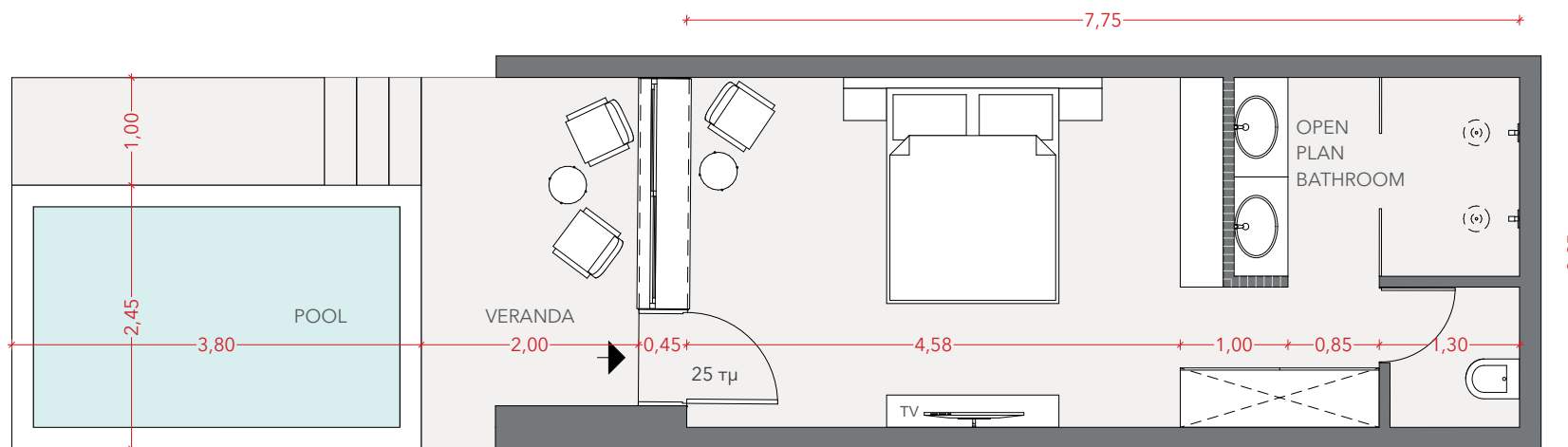
race or balcony with sea or garden view.

All Superiors Double Rooms open onto a 20sqm private veranda providing lots of sunfilled and shaded space for you to relax. With sunbeds for deep relaxation and a long turquoise blue private swimming pool or jacuzzi pool, days can drift by in your private paradise. Hand picked textiles and cushions complete the look.

The accommodation is ideal for 2 people.

The Superior Double Room is also equipped with:

- Premium amenities
- Bathrobes
- Slippers
- Mini Fridge
- Espresso Machine
- In-room Safe
- Hairdryer
- Air Conditioning (individually controlled)
- smart TV
- Laundry Service (at an extra charge)
- Tea & Coffee facilities
- Free WiFi access
- Iron & Ironing Board (upon request)
- Pillow Menu



A
Double Room – Proposal



Room - View 1

A
Double Room – Proposal



Room - View 2

A
Double Room – Proposal



Room - View 3

A
Double Room – Proposal



Room - View 4

A
Double Room – Proposal



Bathroom

A

Accommodation - A3 Standard Triple

A3. Standard Triple Rooms - 29m²

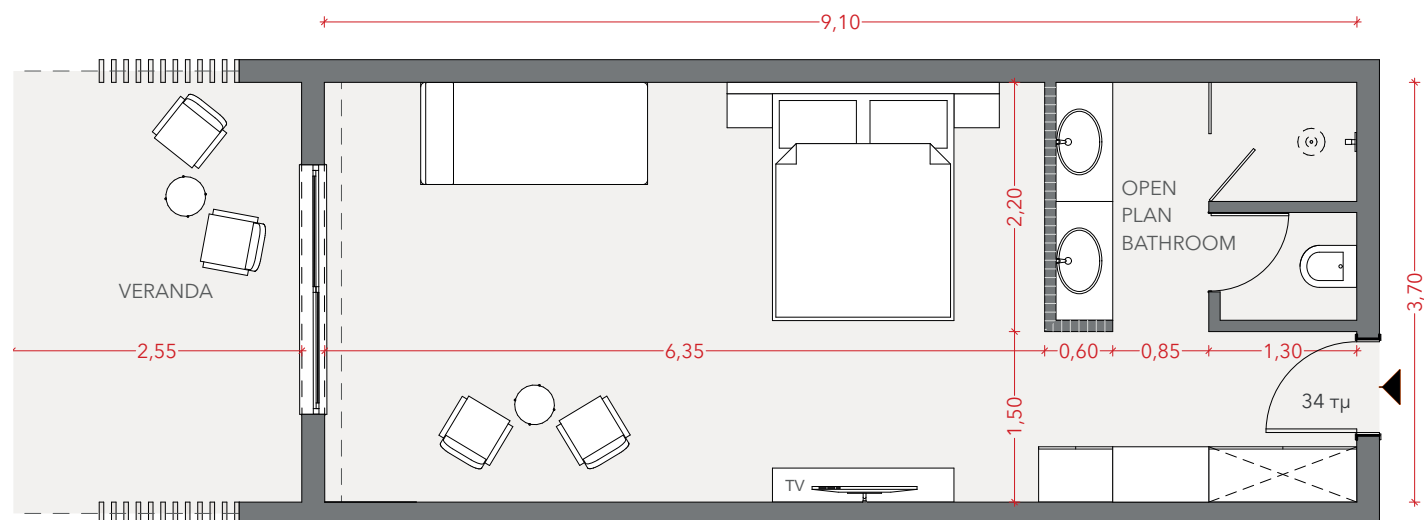
Number of Rooms: 8

Waking up overlooking the sea is just a reminder that you're on holiday. With a view to the garden, these rooms are elegantly furnished and with all the mod cons you need for a pleasant stay, these rooms sleep up to 3 people with a twin or queen size double bed and large sofa bed. There is a balcony or terrace for you to hang out on the outside. Designed in an open-plan layout, the bathroom offers a colourful touch in the interior. It is equipped with a double sink in and separate walk-in shower and toilet cabins.

The accommodation is **ideal for 2+1 people**.

All **Standard Triple Rooms** are also equipped with:

- Bathroom amenities
- Mini Fridge
- In-room Safe
- Hairdryer
- Air Conditioning (individually controlled)
- smart TV
- Laundry Service (at an extra charge)
- Tea & Coffee facilities
- Free WiFi access
- Iron & Ironing Board (upon request)
- Pillow Menu



A

Accommodation - A4 Superior Triple

A4. Superior Triple Rooms - 29m²

Number of Rooms: 17

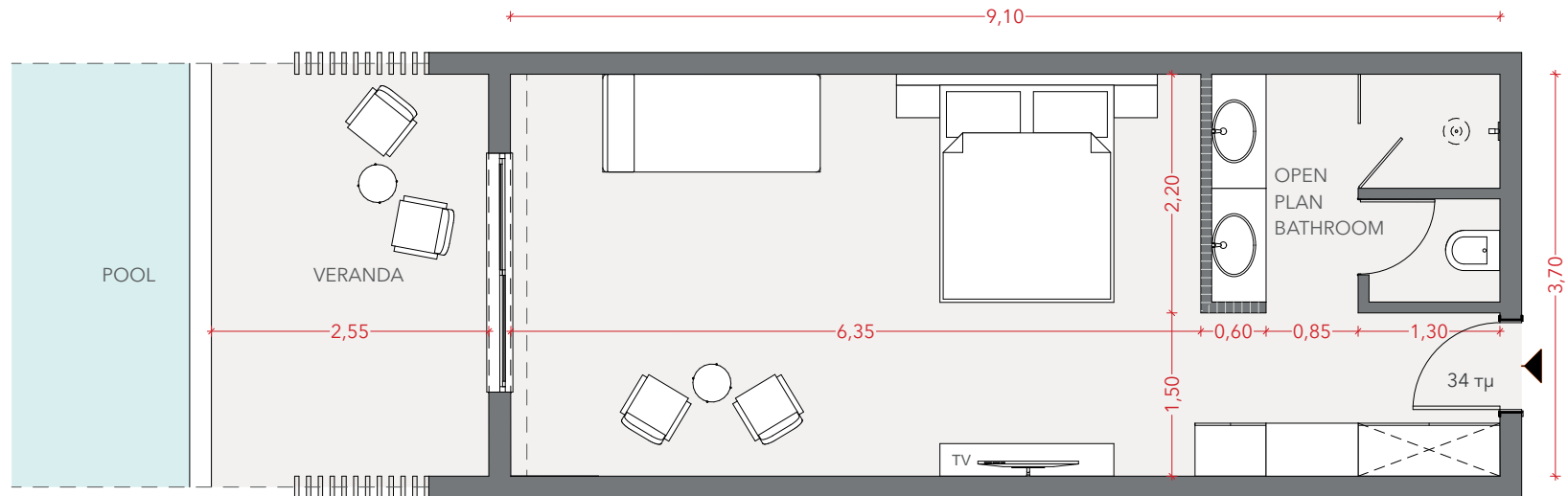
Waking up overlooking the sea is just a reminder that you're on holiday. With a view to the garden, these rooms are elegantly furnished and with all the mod cons you need for a pleasant stay, these rooms sleep up to 3 people with a twin or queen size double bed and large sofa bed. There is a balcony or terrace for you to hang out on the outside. The room also features an open-plan bathroom with separate toilet and shower cabins.

The accommodation is **ideal for 2+1 people.**

All rooms open onto a 20sqm private veranda providing lots of sunfilled and shaded space for you to relax. With sunbeds for deep relaxation and a long turquoise blue private pool or jacuzzi pool, days can drift by in your private paradise. Hand picked textiles and cushions complete the look.

All **Superior Triple Rooms** are also equipped with:

- Premium amenities
- Bathrobes
- Slippers
- Mini Fridge
- Espresso Machine
- In-room Safe
- Hairdryer
- Air Conditioning (individually controlled)
- smart TV
- Laundry Service (at an extra charge)
- Tea & Coffee facilities
- Free WiFi access
- Iron & Ironing Board (upon request)
- Pillow Menu



A
Triple Room – Proposal



Room - View 1

A
Triple Room – Proposal



Room - View 2

A
Triple Room – Proposal



Room - View 3

A
Triple Room – Proposal



Bathroom

A

Accommodation - A5 Suite

A5. Suites - 42m²

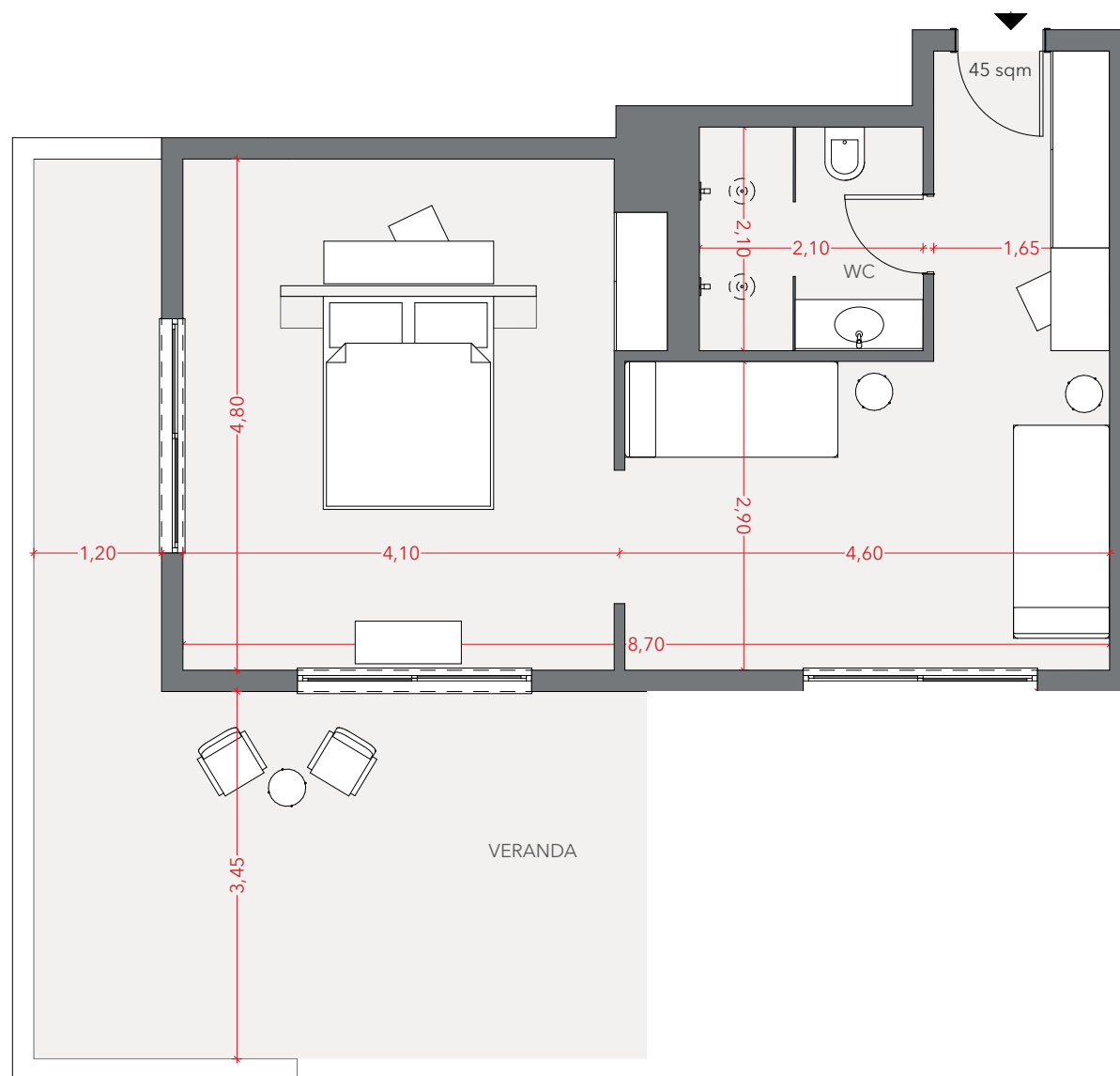
Number of Rooms: 3

The Suites are a true private sanctuary, boasting spacious indoor living - with a comfy double bed, spacious bathroom, seating area - and an equally large area for outdoor living, including a terrace with an outdoors lounge. Minimal architectural lines are offset by a mix of natural surfaces, earthy tones and serene aesthetics. The design is simple yet intriguing, offering an open plan living space that can accommodate up to 4 people. This new accommodation option ensures a unique and unforgettable stay from the comfort of your very private terrace.

The accommodation is **ideal for 2** but can easily accommodate **up to 4**.

The Sea view Suite is also equipped with:

- Premium amenities
- Bathrobes
- Slippers
- Mini Fridge
- Espresso Machine
- Sunbeds
- In-room Safe
- Hairdryer
- Air Conditioning (individually controlled)
- smart TV
- Laundry Service (at an extra charge)
- Tea & Coffee facilities
- Free WiFi access
- Iron & Ironing Board (upon request)
- Pillow Menu



A

Accommodation - A6 Superior Suite

A6. Superior Suites - 40-42m²

Number of Rooms: 4

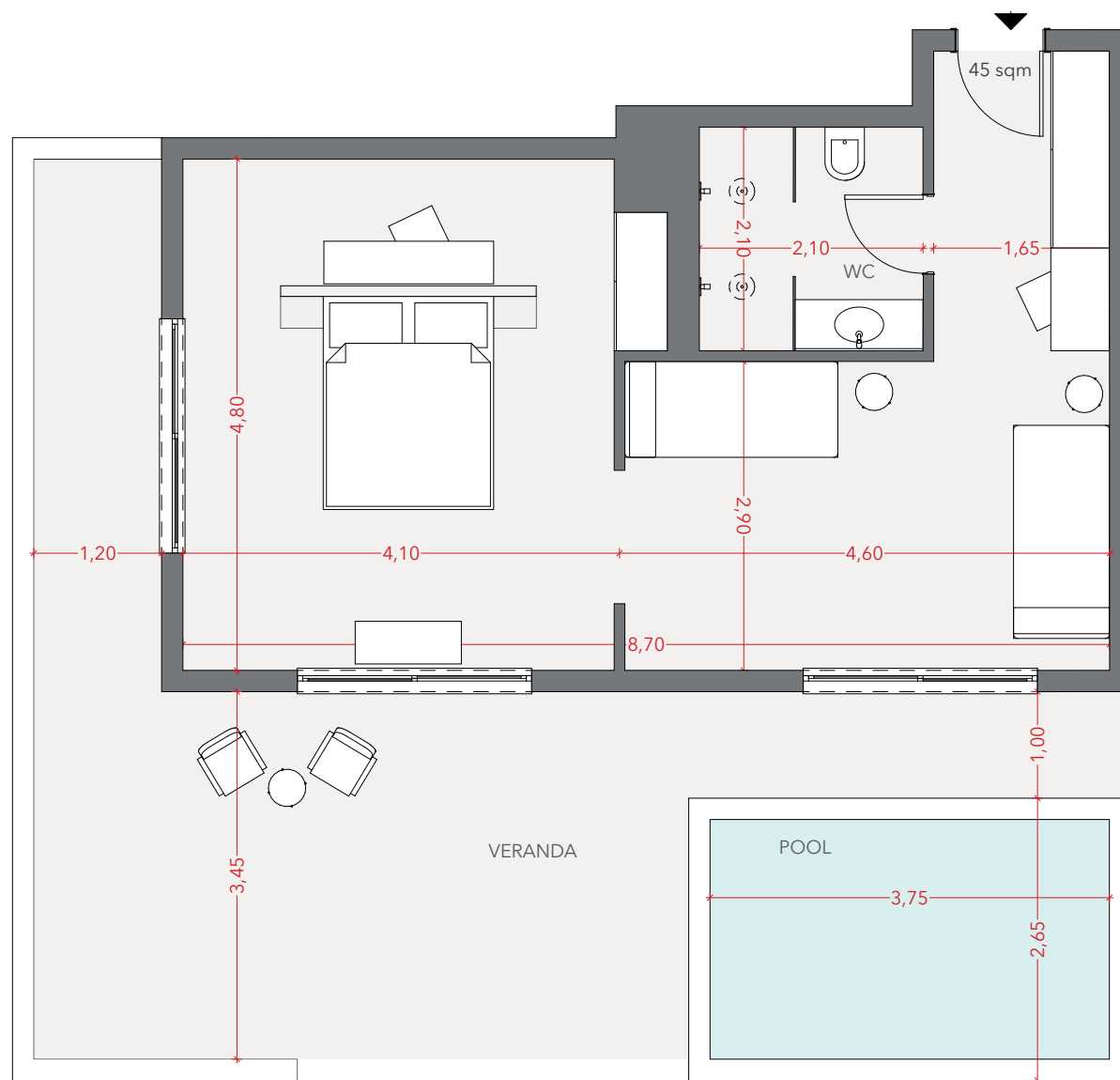
Seaview Suites are a true private sanctuary, boasting spacious indoor living - with a comfy double bed, spacious bathroom, seating area - and an equally large area for outdoor living, including a terrace with an outdoors lounge, sunbeds and its very own private pool or jacuzzi pool. Minimal architectural lines are offset by a mix of natural surfaces, earthy tones and boho easthetics. The design is simple yet intriguing, offering an open plan living space that can be converted into a classic layout in a glimpse of an eye.

This new accomodation option ensures a unique and unforgettable stay from the comfort of your very private terrace and pool.

The accommodation is **ideal for 2** but can easily accommodate **up to 4**.

The Sea view Suite is also equipped with:

- Premium amenities • Bathrobes • Slippers • Mini Fridge • Espresso Machine • Outdoors whirlpool • Sunbeds • In-room Safe • Hairdryer • Air Conditioning (individually controlled) • smart TV • Laundry Service (at an extra charge) • Tea & Coffee facilities • Free WiFi access • Iron & Ironing Board (upon request) • Pillow Menu



A

Accommodation - Room Chart

ROOM TYPOLOGY —		FEATURES —		COUNT —										
BUNGALOWS		JACUZZI or PRIVATE POOL	VIEW	GROUND FLOOR	1ST FLOOR	2ND FLOOR	3RD FLOOR	4TH FLOOR	No OF ROOMS	SURFACE m2	PAX	MAX		
A1	Standard Double	-							0		0	0		
A2	Superior Double	JACUZZI	SIDE SEA	6	6				12	29,00	24	24		
		PRIVATE	SIDE SEA			6			6		12	12		
A3	Standard Triple	-	SIDE SEA						0		0	0		
A4	Superior Triple	JACUZZI	SIDE SEA	3	6				9	29,00	18	27		
		PRIVATE	SIDE SEA			6			6		12	18		
A5	Suite	-							0		0	0		
A6	Superior Suite	PRIVATE	SIDE SEA	1					1	38,00	2	4		
		JACUZZI		2					2		4	8		
TOTAL I				10	12	12			34		72	93		
MAIN BUILDING		PRIVATE POOL	VIEW	GROUND FLOOR	1ST FLOOR	2ND FLOOR	3RD FLOOR	4TH FLOOR	Nr OF ROOMS	SURFACE m2	PAX	MAX		
A1	Standard Double	-	SIDE SEA		3	6	9	3	21	20,00	42	42		
A1*	Standard Double	-	GARDEN				8		8	20,00	16	16		
A2	Superior Double	PRIVATE	SIDE SEA		2				2	20,00	4	4		
A2*	Superior Double	PRIVATE	GARDEN	5		3			8	20,00	16	16		
A3	Standard Triple	-	SIDE SEA		2	2	4		8	29,00	16	24		
A4	Superior Triple	PRIVATE	SIDE SEA						0		0	0		
A4*	Superior Triple	PRIVATE	GARDEN	2					2	35,00	4	6		
A5	Suite	-	SIDE SEA			1	2		3	42,00	6	12		
A6	Superior Suite	PRIVATE	SIDE SEA		1				1	43,00	2	4		
TOTAL II				7	8	12	23	3	53		106	124		
TOTAL (I+II)									87		178	217		

B

Drinking & Dining

B

Drinking & Dining

B1 Main Restaurant

- 160m²

Opening hours

Breakfast: 07:30 – 10:30

Lunch: 12:30 - 14:30

Dinner: 18:30 – 21:30

From the time the sun rises, to well after it sets, this is the epicentre of dining in Eden Rock. Nourish yourself with options from a buffet on offer for breakfast, lunch and dinner. A large variety of options combined with occasional show cooking, creates a unique atmosphere of gathering, making eating the cornerstone of your holiday. Pick a table indoors or opt for the outdoor terrace, enjoying your meal in the summer breeze overlooking the bay. Thematic culinary events offer the visitor the opportunity to taste flavours from around the world as well as to experience and indulge into the greek culinary tradition.



B

Main Restaurant – Proposal



Main Restaurant - View 1

B

Main Restaurant – Proposal



Main Restaurant - View 2

B

Main Restaurant – Proposal



Main Restaurant - View 3

B

Main Restaurant – Proposal



Main Restaurant - View 4

B

Main Restaurant – Proposal



Main Restaurant - View 5

B

Drinking & Dining

B2 A la carte - Italian Restaurant

- 180m²

Opening hours

Dinner: 19:00 – 21:30

This new addition to our à la carte Restaurants comes with an elegantly redesigned outdoor area and a menu exclusively dedicated to the Italian culinary tradition. Located at the very heart of the hotel premises, this Italian à la carte restaurant constitutes an ideal option for a journey of flavours with Italian finesse, tailored to your needs. A selected wine list and selection of desserts are there for you to treat yourself while your main course is served right at your table. A complete dining experience in the Italian à la carte Restaurant is offered once to all our visitors, while all further visits come at an extra charge.



B

Drinking & Dining

B3 Lobby Bar

- 100m²

Opening hours

10.00 - 00.00

This newly designed addition to our drinking venues, offers a warm welcoming lounge just next to the reception desk. Serving a large variety of drinks as well as a selections of signature cocktails, it is an all-day drinking destination. Offering tables both indoors and outdoors, guests can have a drink while enjoying the view to the gardens and the pool.



B

Lobby Bar & A la Carte Restaurant- Proposal



Lobby Bar - View 1

B

Lobby Bar & A la Carte Restaurant – Proposal



Lobby Bar - View 2

B

Lobby Bar & A la Carte Restaurant – Proposal



Lobby Bar - View 3

B

Lobby Bar & A la Carte Restaurant – Proposal



Lobby Bar - View 4

B

Drinking & Dining

B4 Pool Bar

- 60m²

Opening hours

10:00 – 18:00

This pool side retreat is an elegant outdoors lounge where one can enjoy cool drinks, salty snacks and fresh delights. An ideal place to relax on a lounge chair and sip exotic drinks while sitting under the sun.



C Pools

C

Main Pool - Proposal



Main Pool - Entrance View

C

Main Pool – Proposal



Main Pool & Pool Bar - View 1

C

Main Pool - Proposal



Central Pool Area - Birdseye View

C
Private Pools – Proposal



Private Pools - View 1

C
Private Pools – Proposal



Private Pools - View 2

C

Plunge Pools – Proposal



Plunge Pools - View 1

C
Plunge Pools – Proposal



Plunge Pools - View 2

C

Plunge Pools – Proposal



Plunge Pools - View 3

E

Facilities

E

Reception - Proposal



Reception - View 1

E

Reception - Proposal



Reception - View 1

E

Reception - Proposal



Reception - View 2

E

Reception - Proposal



Reception - View 2

E

Reception - Proposal



Reception - View 3

E

General View



E

General View



E

General View



HARMONY eROCK

Ierapetra — Crete — Greece

Architectural Preliminary Study

May 2023



Petros Th. Theodoulou
Managing Director
Concept Hotel Management
8026 Paphos, Cyprus

M +357 99450907
+30 6994890000
concepthotelmanagement.com

USEARCHITECTURE
ARCHITECTURAL DESIGN AND CONSTRUCTION SUPERVISION
www.usearchitecture.gr

<https://usearchitecture.gr>



<https://www.uberkreative.com>