



Updated: 09.2022

# Fact Sheet

## General Information

HOTEL CATEGORY	5 Stars
MEALS SYSTEM	All Inclusive
REOPENING	May 2021
	Maintenance 2020-2021
ADDRESS	Nabq Bay - Sharm el Sheikh
AIRPORT	Sharm El Sheikh (10 km)
TELEPHONE	<b>0020 – 69 – 371 00 50</b>
FAX	<b>0020 – 69 – 371 00 55</b>
EMAIL	<b>info.magicworldsharm@jazhotels.com</b>
WEBSITE	<b><a href="http://www.jazhotels.com">www.jazhotels.com</a></b>

## Location

The hotel is located beachfront, in the middle of the nationally protected South Sinai natural area, surrounded by mountains from one side and a beautiful coral reef—from the other. Village style area of 94.500 m2 consists of one main building and twelve three-storey bungalows. 521 rooms in total. Located in 10 kilometers from the airport and around 30 kilometers from Naama Bay. Transfer time: approximately 15 minutes.

## Restaurants & Bars

### RESTAURANTS:

Main Restaurant „MAGICO“

4 Speciality Restaurants  
(per reservation, according to the concept & availability):

Oriental Restaurant „SOFRA“

Street food Restaurant “DOWNTOWN”

Mediterranean Restaurant „THE FLAVOUR“

Steak House (extra)

### BARS:

Wunderbar (Lobby Bar)

Terrace Bar

Eagles Lounge

Activity Pool Bar

Relax Pool Bar

Coral Beach Bar

Tower Coffee House (Coffee & Cakes)

The Club Lounge

### SNACKS:

Snack Menu for lunch in “DOWNTOWN”

Restaurant

Sandwich Corner during the day in

“DOWNTOWN” Restaurant

Late snacks in “The Club Lounge”.

(Grab & Go)

## Pools & Beach

ACTIVITY POOL integrated with KIDS’ Pool

RELAX POOL

A broad, long sandy BEACH with the beautiful alive coral reef. At around 200m walking, the reef goes down to 30m deep. Jetty—240m. Beach towels, sunbeds, umbrellas & windbreakers, showers & changing cabins are included.

## Environment Protection

Since the opening, the hotel is doing its contribution to the environment protecting process and local community support. During these years, it was awarded with numerous Certificates & International Awards.

### OTHER CERTIFICATION

The hotel was among the first hotels in Egypt to receive ISO 14001 Certification. Numerous TUI International Awards in different categories, Silver

## Diving Center

Great choice of courses / SSI (Open Water, Advanced Open Water, Nitrox, night diving, Wreck diving, etc.)

Excursions to various the most famous diving areas around (picturesque Bays of Sharm el Sheikh, Tiran Island, Ras Mohammad etc.)

## Sport & Fitness

### SPORT GAMES WITH A BALL:

Tennis  
Table tennis  
Mini football  
Beach volleyball  
Water basketball  
Water volleyball  
Water polo

### FITNESS

Aqua gym

Dance aerobics  
Power aerobics  
Pilates  
Step aerobics  
Stretching  
Zumba  
Yoga  
Salsa & other dance courses

### FUNSPORT:

Bocce  
Shuffleboard

Archery

Darts

### GROUP LESSONS & TOURNAMENTS

Group lessons: Archery  
Tournaments: Archery, Beach volleyball, Bocce, Shuffleboard



### MIVIDA WELLNESS CENTER:

Free of charge: fully equipped modern gym

Extra services: Sauna, Steam room, Relaxation Lounge, Massages, Body & Hamam treatments, all type of Beauty salon services

## Entertainment & Other

Show, Live Music, Pool games & Evening program 7 days per week

Beach, Pool and Foam parties (during summer season only)

Magic World KIDS' CLUB available 6 days per week:

Kids Club for the children from 4 to 8 years  
Kids Club for the children from 9 to 13 years  
Teens Club for the children from 14 to 16 years

### SPECIAL ENTERTAINMENT

Archery for children from 8 to 13 years

Pirate's Day, Olympic Games Day, Picnic Day etc.

Mini Disco, Mini Cinema etc.

5 Tennis courts

Meeting Room for around 60 pax (rental equipment—extra)

Free Wi-Fi

Books for reading

Shops Arcade: souvenirs, jewelry etc.

## Rooms

521 rooms\*. 355 SUPERIOR rooms, 159 DELUXE rooms & 7 JUNIOR SUITE/EXECUTIVE SUITE rooms

All the rooms are equipped with the a/c, telephone, hair dryer, satellite TV, mini bar, safe box, shower, toilet & balcony. Tiled floor.

Superior rooms, Deluxe rooms are available with Garden view, Pool view and Sea view. Suites—with Garden or Sea view.

Tea/coffee facilities are available in the room (free of charge).

SUPERIOR ROOM Around 28m<sup>2</sup>, comfortable cozy room. Max. capacity: 2 ADULTS.

DELUXE ROOM Around 34m<sup>2</sup>, comfortable cozy room, divided into 2 parts by the curtain. Max.: 2 ADULTS + 2 CHILDREN (up to 12 years).

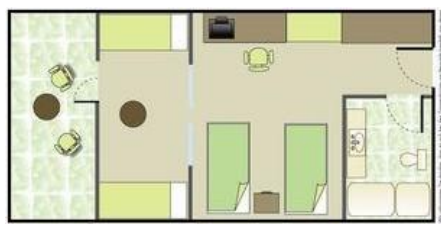
JUNIOR SUITE ROOM Around 56m<sup>2</sup>, comfortable cozy room—bedroom is separated from the living room (Studio type). Max.: 2 ADULTS + 2 CHILDREN (up to 12 years).

## Room Plans

Room plan is just a sample. It may differ from the real view.



Superior Room



Family Deluxe Room



Junior Suite Room