



SUMMER CONCEPT 2024

Main Information								
Name of the Hotel		KoruMar Ephesus Beach & SPA Resort		Opening Date		2018		
Category		5 Star		Last Renovation		-		
Pension (Board)		Ultra All Inclusive		Area		109.000 m2		
Phone Number		+90 232 893 13 13		Fax Number		+90 232 893 13 23		
Web Address		www.korumarephesus.com.tr		E-Mail Address		info@korumarephesus.com.tr		
Post Address		Atatürk Mah. Pamucak Mevkii No: 16 35920 Selçuk / Izmir / Turkey		Location		At the Sea Side		
Check-in Time		After 14.00		Check-out Time		12.00		
Season		April - November		Social Media		facebook.com/KoruMarEphesus instagram.com/KoruMarEphesus		
Distances								
Airport (ADB)		60 km		Ephesus Ancient City		8 km		
Selçuk		10 km		The House of Virgin Mary		15 km		
Kuşadası		12 km		Miletus Ancient City		70 km		
Izmir		70 km		Didim		85 km		
Sea Side		0 km		Pamukkale		190 km		
Accepted Credit Cards				Certificates				
Visa, ICB, Master Card, Euro Card				Blue Flag, Safe Tourism				
Hotel Services								
without charge				with charge				
Wi-Fi		Concierge Service		Exchange		Business Center, Telephone, Fax		
Elevator (10)		Lounge (Library)		Shops		Laundry Service		
TV Hall				Market		Hairdresser		
Garden				Boutique		Banquet Facilities		
				Doctor		Infirmary		
				Cabana		Room Service (24 hours)		
Activities								
without charge				with charge				
Table Tennis		Tennis Courts (2) daytime		Billiards		Table Football		
Darts	Archery	Tennis Equipments (with deposit)		Game Center				
Beach Volleyball		Basketball						
Football	Aerobics	French Balls (Boccia)						
Play Card Room								
Animation								
for Adults				for Children				
Day - Evening Animation		6 days per week		Game Room		Indoor		
Languages		Turkish, English, German, Russian		Play Ground		Outdoor		
Concept		At daytime soft animation, pool games, low volume music and 2 hours music at the pool. At evening time professional shows.		Animation		Mini Disco (21.00-21.30)		
				Mini Club		Ages: 4-12 years Working Hours: 10.00- 12.30 & 14.30-17.30 & 20.30-22.00		
For Children								
Children Buffet		with Family Dining Area		Baby Cot (on request)		without charge		
Baby Chairs in Restaurant		without charge		Baby Stroller Rental		with charge and deposit, due to availability		
Pools								
Pool	Fresh Water	Heated	Depth	Size	Working Hours	Sunbed	Towel	Parasol
Main Pool	√		1.40 m	3900 m ²	08.00 - 20.00	√	√	√
Children's Pool	√		0.40 m	25 m ²		√	√	√
Indoor Pool	√	√ (on April - May - October - November)	1.40 m	245 m ²		√	√	
Indoor Children's Pool	√	√ (on April - May - October - November)	0.40 m	30 m ²		√	√	






.....
İmza / Signature

.....
İmza / Signature

Waterslides							
for Adults (9 Slides)				for Children (8 Slides)			
Type	Length	Height	Age / Height Limit	Type	Length	Height	Age Limit
Tunnel Free Fall	27 m	9 m	min. 10 years/min. 1.20 m	Compact Slide	16,87 m	2,60 m	3-10 years
Aqua Tube	63 m	9 m	min. 10 years/min. 1.20 m	Aqua Tube	10,12 m	1,40 m	3-10 years
Free fall	28 m	9 m	min. 10 years/min. 1.20 m	Wide Slide	4,44 m	1,20 m	3-10 years
Multi Slide (3)	27 m	9 m	min. 10 years/min. 1.20 m	Octopus (3)	6,75 m	3,60 m	0-10 years
Hill Slide	20 m	12 m	min. 10 years/min. 1.40 m	Elephant	2,20 m	1,50 m	0-10 years
Black Hole	107 m	12 m	min. 10 years/min. 1.40 m	Mini Rainbow	2,40 m	1,50 m	0-10 years
Body Slide	94 m	12 m	min. 10 years/min. 1.20 m				
*Slides are in operation by the hour. Opening dates: 25.04.-25.10.							
Beach							
Private Section in Public Beach, 230 m long, large sandy beach.							
SPA (16+) -2300 m ² -							
without charge				with charge			
Sauna	Turkish Bath			Beauty Center	SPA Treatments		
Steam Bath	Fitness Center (16+) -280 m ² -			Massage	Turkish Hamam Rituals		
Indoor Pool (245 m ²)	Ice Fountain			VIP Room			
Shock Shower	Relaxing Area						
Building							
Number of Floors	3	Number of Rooms	388	Number of Buildings	2		
Rooms							
Room Type	Features			sqm (incl. Bathroom)	Capacity	Total	
1. Standard Room	One bedroom, one double bed or two single beds, one sofa, armchair, balcony, individual air condition, writing desk, telephone, full HD LED TV with satellite systems, music broadcast (from TV), Wi-Fi (free), 220 V, one bathroom with shower, hair dryer, parquet floor, digital safe box (free), tea & coffee-water heater (kettle) and mini bar. Extra bed and baby cot on request available.			34	3 adults+ 1 child (0-3 years) or 2 adults + 2 children (0-12, 0-3 years)	208	
							
2. Swim Up Standard Room	One bedroom, one double bed or two single beds, one sofa, armchair, balcony, individual air condition, writing desk, telephone, full HD LED TV with satellite systems, music broadcast (from TV), Wi-Fi (free), 220 V, one bathroom with shower, hair dryer, parquet floor, digital safe box (free), tea & coffee-water heater (kettle) and mini bar. Extra bed and baby cot on request available. Direct access to shared pool from balcony terrace. <u>Children are accepted from 3.99 years. Children are under the supervision and responsibility of their parents.</u>			34	3 adults or 2 adults + 2 children (4-12 years)	46	
							

.....
İmza / Signature

.....
İmza / Signature

Room Type	Features	sqm (incl. Bathroom)	Capacity	Total
3. Big Room	Two rooms (1 bedroom + 1 living room) and two bathrooms with shower, door between rooms, one double bed and two sofas, balcony, individual air condition, writing desk, telephone, two full HD LED TV with satellite systems, music broadcast (from TV), Wi-Fi (free), 220 V, hair dryer, parquet floor, digital safe box (free), tea & coffee-water heater (kettle) and mini bar. Baby cot on request available.	44	4 adults + 1 child (0-3 years)	32
				
4. Junior Suite	One bedroom with living area, one double bed and one sofa, armchair, balcony, individual air condition, writing desk, telephone, two full HD LED TV with satellite systems, music broadcast (from TV), Wi-Fi (free), 220 V, one bathroom with shower and jacuzzi bath, hair dryer, parquet floor, digital safe box (free), tea & coffee-water heater (kettle) and mini bar. Extra bed and baby cot on request available.	44	3 adults + 1 child (0-12 years) or 4 adults	32
				
5. Suite	Two rooms (1 bedroom + 1 living room), one bathroom with special Jacuzzi bath and one bathroom with shower, two balconies, door between rooms, one double bed and two sofas, four person dining table, individual air condition, writing desk, telephone, two full HD LED TV with satellite systems, music broadcast (from TV), Wi-Fi (free), 220 V, hair dryer, parquet floor, digital safe box (free), tea & coffee-water heater (kettle), mini bar. Turndown Service, Fruit & Chocolate & Local Champagne (on arrival), 15 % discount for Cabana Service. Baby cot on request available. Sea and garden view rooms and swim up room option are available.	60	5 adults + 1 child (0-3 years)	34
				
6. Honeymoon Suite	One room, one double bed, sitting area, dress room, balcony, individual air condition, writing desk, telephone, full HD LED TV with satellite systems, music broadcast (from TV), Wi-Fi (free), 220 V, bathroom with shower and special Jacuzzi Bath in the bedroom, hair dryer, ceramic floor, digital safe box (free), tea & coffee-water heater (kettle), mini bar. Turndown Service, Fruit & Chocolate & Local Champagne (on arrival), 15 % discount for Cabana Service. Swim up room option is available.	60	2 Adults	6
				
7. Honeymoon Room	One bedroom, one double bed, mirror on the ceiling, one sofa, armchair, balcony, individual air condition, writing desk, telephone, full HD LED TV with satellite systems, music broadcast (from TV), Wi-Fi (free), 220 V, one bathroom with shower, hair dryer, parquet floor, digital safe box (free), tea & coffee-water heater (kettle) and mini bar.	34	2 Adults	8
				

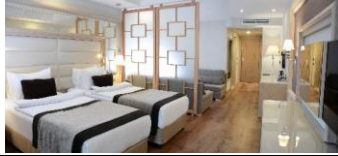
.....
İmza / Signature

.....
İmza / Signature

Room Type	Features	sqm (incl. Bathroom)	Capacity	Total
8. Disabled Standard Room	One bedroom, one double bed or two single beds, armchair, balcony, individual air condition, writing desk, telephone, full HD LED TV with satellite systems, music broadcast (from TV), Wi-Fi (free), 220 V, one bathroom with shower, hair dryer, parquet floor, digital safe box (free), tea & coffee-water heater (kettle) and mini bar. Extra bed and baby cot on request available.	34	3 adults + 1 child (0-3 years) or 2 adults + 2 children (0-12, 0-3 years)	4



9. Large Room	One bedroom with living area, one double bed or two twin beds and two sofas, armchair, balcony, individual air condition, writing desk, telephone, two full HD LED TV with satellite systems, music broadcast (from TV), Wi-Fi (free), 220 V, one bathroom with shower, hair dryer, parquet floor, digital safe box (free), tea & coffee-water heater (kettle) and mini bar.	40	4 Adults	18
----------------------	--	----	----------	----



Rooms at a glance

ROOMS	1. Standard Room & 8. Disabled Room	2. Swim Up Standard Room	3. Big Room	4. Junior Suite	5. Suite	6. Honeymoon Suite	7. Honeymoon Room	9. Large Room
Bed & Sofa Size	Single Bed: 100 cm x 200 cm / Double Bed: King Size 200 cm x 200 cm Sofa: 190 cm x 90 cm							
Non - Smoking	√	√	√	√	√	√	√	√
Balcony	√	√	√	√	√	√	√	√
Shower	√	√	√	√	√	√	√	√
Jacuzzi - Bath				√	√			
Hair Dryer	√	√	√	√	√	√	√	√
Bathrobe & Slippers	√	√	√	√	√	√	√	√
Scale					√	√		
Iron					√	√		
Digital Safe Box	√	√	√	√	√	√	√	√
Coffee & Tea Making Facilities	√	√	√	√	√	√	√	√
Mini Bar	√	√	√	√	√	√	√	√
	Mini bar (1 x per day filled) with water, soda and cola. Additional 75 cl red wine for Suite and Honeymoon Suite on arrival.							
Telephone	√	√	√	√	√	√	√	√
LED TV 40"	√	√	√	√	√	√	√	√
LED TV 32"			√	√				
Music Broadcast	√	√	√	√	√	√	√	√
Individual Air Condition	√	√	√	√	√	√	√	√
Highspeed WI-FI	√	√	√	√	√	√	√	√
220 V	√	√	√	√	√	√	√	√
Door between Rooms			√		√			
Extra Bed	√	√		√	√			√
Baby Cot (on request)	√	√	√	√	√			√
Turndown Service					√	√		
Fruit Service (on arrival)					√	√		
Cabana Discount (15%)						√		
Room Cleaning	Daily							
Bed Sheet Change	Every 3rd day							
Towel Change	On request							

For Honeymooners (with reservation)

One complimentary a la carte dinner (with reservation).	Fruit Basket, Turkish Delight and one bottle housewine (on arrival) & Special Room Decoration
Additional for Honeymoon Suite reservation; one complimentary breakfast served in the room on a preferred morning (with reservation). Unlimited dinner for A la carte restaurant (with reservation).	

Restaurants & Bars & UAI Concept							
Name	Type	Drinks	Location	Hours	incl. UAI Concept	Capacity (Pax)	
The Restaurant	Main Restaurant (with terrace)	Breakfast	Indoor		07.00-10.00	900	
		Late Breakfast			10.00-11.00		
		Lunch			12.30-14.00		
		Children Buffet			18.30-19.30		
		Dinner			19.00-21.30		
		Night Buffet			23.00-00.30		
Zeytin	A la Carte	Bottle Housewine, Beer, Local Alcoholic Drinks, Soft Drinks, Tea, Coffee, Water	Indoor	19.00-22.00	Cover Charge, with reservation	90	
Safran	A la Carte		Indoor	19.00-22.00	Cover Charge, with reservation	70	
Roka (between 15.05-30.09)	A la Carte		Outdoor	19.00-22.00	Cover Charge, with reservation	70	
Pool Bar	Local Drinks	Bottle Housewine, Beer, Local Alcoholic Drinks, Soft Drinks, Water	Outdoor	10.00-18.00	√	no sitting	
Beach Bar							
Snack Bar	Snack Food, Limited Open Buffet	Bottle Housewine, Beer, Local Alcoholic Drinks, Soft Drinks, Tea, Coffee, Water	Outdoor	11.00-16.00 (Food)	√	450	
				11.00-18.00 (Drinks)	√		
Patisserie	Cookies, Cakes, Ice Cream, Sandwiches Selection	Tea / Coffee	Indoor	15.00-18.00	√	80	
			Outdoor				150
Fuaye Bar	Local & Import Drinks	Bottle Housewine, Import Drinks, Beer, Local Alcoholic Drinks, Soft Drinks, Tea, Coffee, Water	Indoor	14.00-18.00	√	150	
			Outdoor				150
Sports Bar (closed between 15.06.-15.09.)	Local & Import Drinks	Bottle Housewine, Import Drinks, Beer, Local Alcoholic Drinks, Soft Drinks, Water	Indoor	21.00-24.00	√	90	
			Outdoor				150
Lobby Bar	Local & Import Drinks	Bottle Housewine, Import Drinks, Beer, Local Alcoholic Drinks, Soft Drinks, Tea, Coffee, Water	Indoor	24 h	√	250	
			Outdoor				350
*A la carte Restaurants and Animation are closed once per week.			*Three visits a week, per person 10.- € cover charge for each all. inc. a'la carte dinner with reservation.				
* Beverages are 24 hours included. One bar will be open 24 hours.			*The opening & closing hours, working days' change of the food & beverage areas are at the discretion of the hotelier.				
* Fresh Orange Juice at Breakfast, Ice Cream, Local Drinks, some Import Drinks and Housewine are included to the concept.			*Fresh Juices, wrapped ice cream, cellar wines and import drinks (except drinks which are included to the concept) are everywhere and everytime with charge.				
*Import drinks and brands depends on availability. Import drinks are served at the Fuaye, Lobby and Sports Bar.			*All drinks will be served with high service quality to the table. The drinks will be brand named and are known. There will be no bottle service of beer and spirit drinks.				
*Alcoholic drinks are served 18+.			*DRESS CODE: At dinner time in all restaurants smart casual dress.				
* All outdoor facilities are in the season at the discretion of the hotelier limited available.			* It is required from all guests to wear the hotel's wristband.				
* Children must be always under Adult Supervision.							
* Arrangements for special days (cake, flower, etc.) are with charge.			* It is not allowed to bring food & beverage into the hotel from outside.				
* Due to national laws, smoking in the building is forbidden.			* The facility is built on a flat area, so it is suitable for comfortable access to everywhere for disabled guests.				
* Due to the new circulars regarding COVID-19 from the relevant institutions and ministries of the Turkish Government, may our activities and services decrease, increase or change.							

KORUMAR EPHESUS BEACH & SPA RESORT

TOUR OPERATOR

Signed by	Tacettin Özden	Signed by	
Date		Date	
Signature		Signature	