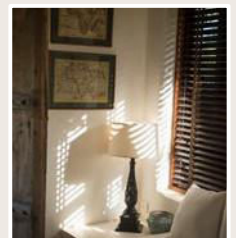




Qambani

Qambani is composed of a superb collection of detached thatched, modern buildings, or bandas, strung along a wide, gardened plot with 270 metres of sea front.

All buildings have access to good wifi and the Sonos sound system, and use state of the art LED lighting to optimum effect.





Living Room

A huge, breezy living space extending along the turquoise seafront, in the centre of the property - with wide terrazzo terrace and so many sweet spots for hanging out.

Centre, seafront, with views.

6 sofas total in three main seating areas, plus self-help bar with fridge.

Sides (louvred) all openable.

Sonos sound system and wifi.

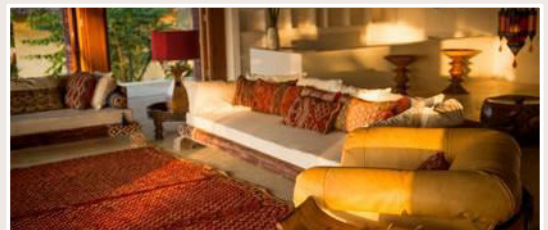
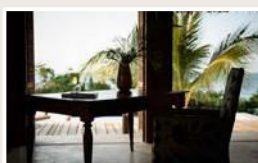
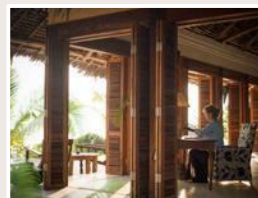
Overhead fans.

Humidor with premium Cuban cigars

Large sun-terrace with low dining table and long sun banquettes,

Sonos sound system and wi-fi.

Plunge pool, with night lighting





Dining Room

Centre, seafront with views, seating 16.

One large table and side buffet tables.

Sonos sound system and wifi.

Overhead fans.

Outside dining area.





Kitchen and others

All these rooms are grouped behind the main living spaces, around a large, formally planted garden at the entrance of the property.

Kitchen/Cellar

Situated on courtyard behind dining room.

Generous, light and airy modern open-plan kitchen, fully equipped for catering to 24 guests: including two large glass-fronted fridges, 6-burner gas range, electric double oven, steam oven, ice-maker.

Overhead fans and air-conditioning.

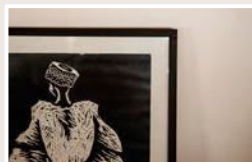
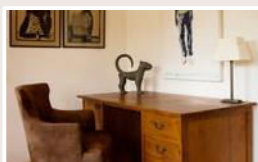
Cellar and cool store downstairs.

Gym

A beautifully mirrored room containing a small selection of body building equipment, treadmill and exercise bikes. TV. Air-conditioning and overhead fans.

TV Room

Comfy and informal, the TV room has a 51" la t-screen, HDTV with Bose surround sound audio. To one side, on a small desk, is an apple computer, connected to wifi, and colour printer/scanner. Air-conditioning, and overhead fans.





Bedrooms

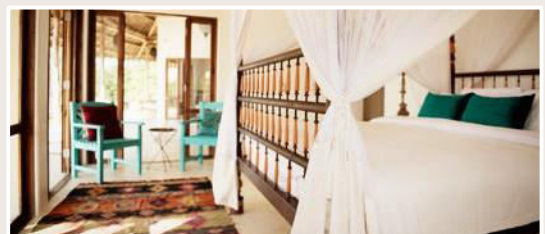
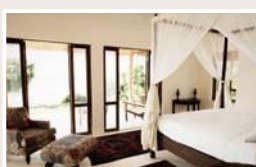
Six uniquely styled detached bedroom cottages, each configured and decorated individually.

All face the broad ocean views, and are full of light and sea-breezes.

Two have two independent bedrooms.

- A. Castaway bedroom villa
- B. Coastal bedroom villa
- C. Africa bedroom villa
- D. Plantation bedroom villa
- E. Sultan bedroom villa
- F. Sundowner bedroom villa

- 1. Living Area
- 2. Dining
- 3. Study/TV room and gym
- 4. Wellness area
- 5. Kitchen (and cellar)
- 6. Pool
- 7. Salt water pool





Castaway

If Robinson Crusoe had found a few more tools and a crowd of craftsmen to help him, he might have built this as his hideaway. This bedroom villa is all about ocean – delicate marine blues, antique boat timber furniture and a fabulous outside shower that overlooks the sea.

Location

On the far western end of the grounds, to the right of infinity pool, closest to the sea steps. Sea view.

Accommodation

Suitable for families. All on ground floor.

Total two bedrooms, two bathrooms:

One double (bed 200x220cm) with ensuite dressing room and bathroom - bath and outside shower.

One twin (each bed 100 x200cm) with ensuite shower-room.

Extra bed/baby cot possible.

Shared sitting area and sea-view verandah.

Total size 95m²

Amenities

Air-conditioning. Over-bed fans. Wifi. Espresso machine.

Mini-fridge. JBL bluetooth Sound system.





Coastal

Cool, airy and elegant – the perfect space for shaking the sand of your feet – with carved wooden furniture, antique Chinese porcelain, billowing nets and delicate shades of the seaside.

Location

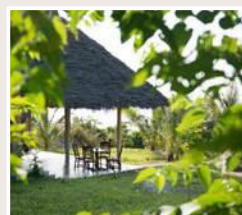
To the west of the living areas, between Africa and Castaway.
Above infinity pool. Seaview.

Accommodation

Suitable for families. All on ground floor.
Total two bedrooms, two bathrooms:
One double (bed 200x220cm) with ensuite dressing room and bathroom - bath and outside shower.
One twin (each bed 100 x200cm) with ensuite shower-room.
Extra bed/baby cot possible.
Shared sitting area and sea-view verandah.
Total size 95m²

Amenities

Air-conditioning. Over-bed fans. Wi-i. Espresso machine.
Mini-fridge. JBL bluetooth Sound system.





Africa

African gets a contemporary makeover, with bold tribal textiles, carvings and calming creams. With the sunlight filtering through, and a lame tree shading the verandah, a soft sanctuary for tropical days.

Location

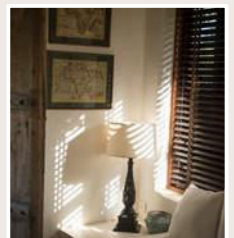
To the west of the living areas, close to dining room and kitchen.
Sea view.

Accommodation

Ground and first floor.
Suitable for a couple:
One double (bed 200x220cm) on ground floor with bathroom - double basins, bath and shower.
Lounge area upstairs at the open-air loft room with overhead fan.
Dressing area, sitting area and sea-view veranda.
Downstairs area 65m². Upstairs area 25m².

Amenities

Air-conditioning (main bedroom and bathroom).
Over-bed fans. Wi-fi. Espresso machine. Mini-fridge. JBL bluetooth Sound system.





Plantation

Think romantic colonial with a dusting of spice. The retreat for seasoned planters to recover themselves, amidst antique maps, botanical drawings and Persian rugs. Upstairs, a room in the eaves, breeze cooled and bursting with sea view.

Location

To the east of the living areas, closest to living room.
Sea view.

Accommodation

Ground and first floor.

Suitable for a couple:

One double (bed 200x220cm) on ground floor with bathroom - double basins, bath and shower.

Lounge area upstairs at the open-air loft room with overhead fan

Dressing area, sitting area and sea-view veranda.

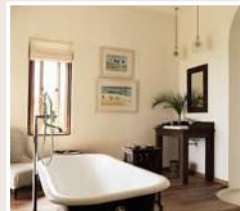
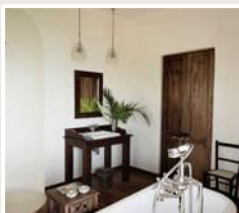
Downstairs area 65m². Upstairs area 25m².



Amenities

Air-conditioning (main bedroom and bathroom). Over-bed fans.

Wi-i. Espresso machine. Mini-fridge. JBL bluetooth Sound system.





Sultan

The viva city of Zanzibar pervades these two companion rooms - strong colours, naïve African modern art and quirky antiques. All centred around a generous shared terrace and verandah for long, lazy afternoons by the ocean.

Location

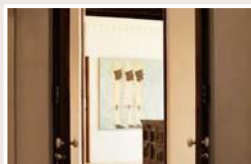
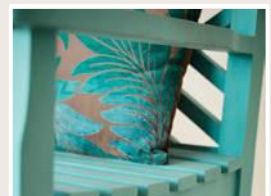
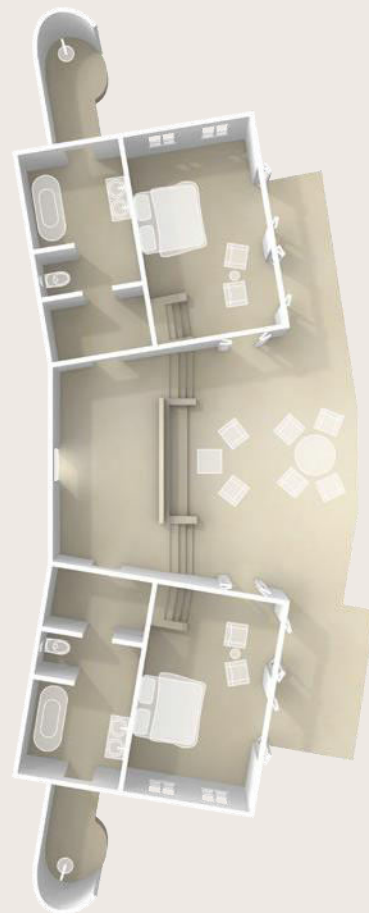
Between Sundowner and Plantation, to the east of the living areas.
Sea view.

Accommodation

Each suitable for one couple. All on ground floor.
Total two doubles (beds 200 x 220cm) with bathrooms - double basins, baths and showers.
Shared central open-air sitting area and sea-view verandah.
Total area 130m².

Amenities

Air-conditioning. Over-bed fans. Wi-fi.
Espresso machine. Mini-fridge. JBL bluetooth Sound system.





Sundowner

Probably the most romantic of all the bedroom villas, harking back to the days of the sultans, harems and parapets. A mini tropical palace for two, couched in rampant greenery and teetering on the edge of the coral cliff.

Location

Tucked away on the far eastern end of the grounds, the most private of the cottages, down 20 shallow steps, closest to shore. Unimpeded sea views.

Accommodation

Self-contained with own kitchenette. A traditional Swahili Arab style building, with smaller than average rooms. Suitable for one couple.

Total one double (bed 160x200cm) bedroom, one shower room, sitting area.

Infinity plunge pool.

Sea-view verandah and sundowner rooftop.

Total area 50m².

Amenities

Air-conditioning. Over-bed fans. Wi-Fi. Espresso machine, fridge. JBL bluetooth Sound system.

