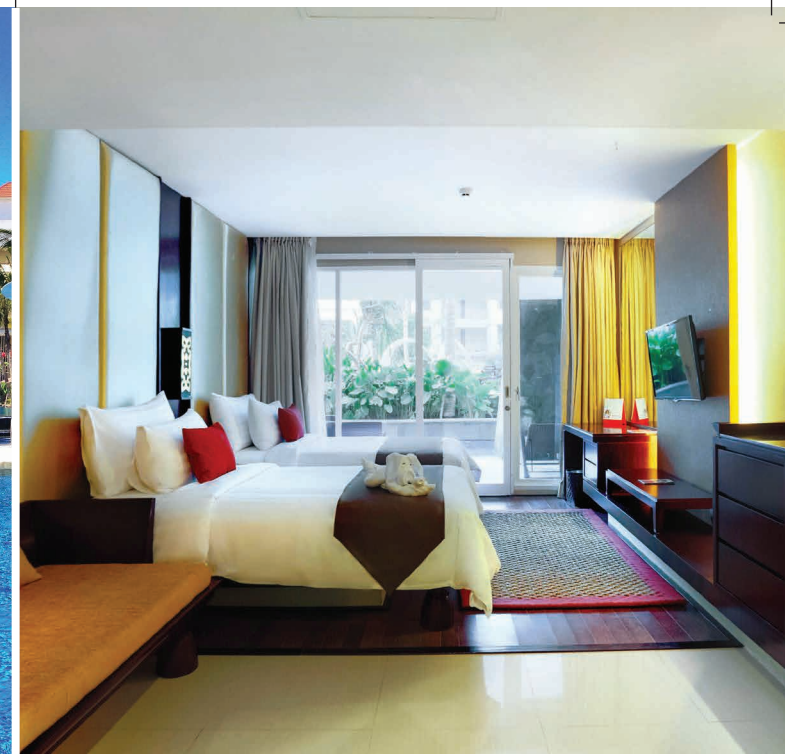




fact sheet



Sanur's Rejuvenating 4-Star Resort

contact information

Address : Jalan Danau Tamblingan No. 99A
 : Sanur, Bali 80228, Indonesia
 Telephone : (62-361) 849 7000
 Fasimile : (62-361) 849 7770
 E-mail : bali-srwj@swiss-belhotel.com
 GDS Code : YX

Swiss-Belhotel International
 Sales & Marketing Office, Bali
 Swiss-Belinn Seminyak Commercial Area
 Jalan Sunset Road No.88 S, Seminyak – Bali, 80361
 Tel: (62-361) 846 8390 Fax: (62-361) 846 8391
 E-mail: rso-bali@swiss-belhotel.com

www.swiss-belhotel.com

general hotel information

Hotel Rating : 4-Star
 Number of Rooms : 306
 Number of Meeting Rooms : 4 Meeting rooms
 Physically Challenged Facility : Available
 Check-in : 02:00 p.m.
 Check-out : 12:00 noon

room types

Swiss-Belresort Watu Jimbar boasts 306 well-appointed guestrooms including

- Deluxe Rooms Pool View
- Grand Deluxe Rooms Pool View
- Deluxe Plunge Pool
- Suites

room amenities

Each guestroom is equipped with the following features:

- All rooms with private outdoor Jacuzzi, pool view or plunge pools
- Electricity : 220V (adaptor available upon request)
- 15 Mbps complimentary wireless internet access in guest rooms and public areas
- 14" Laptop size In Room Safe
- King/Twin Bed available for Deluxe rooms
- Electronic Door lock
- Integrated multi-plug in all rooms
- Mini Refrigerator in all rooms
- Coffee and Tea making Facilities in all rooms
- 39" LCD TV (42" in suites) with 50+ international channels
- Living and dining area in Suites

King or twin beds are available in Deluxe rooms, and all Suites will have a living and dining area. A specially appointed room for disabled guests will also be available. All rooms come with a private outdoor Jacuzzi Pool View.

facilities and services

- 15 Mbps WIFI Internet access in public areas
- Resort Shop & Business Lounge
- Laundry and Dry cleaning
- Massage treatments at the pool or on call in guest rooms
- Fitness Centre. Opening hours from 07.00 a.m. to 9.00 p.m.
- 24 hours Security and CCTV camera
- Guest Elevators
- Parking Space

banquet facilities

Swiss-Belresort Watu Jimbar offers 6 sophisticated function rooms fully-equipped with state-of-the-art audio visual and banquet facilities giving every guests utmost convenience in their important business meetings or ensuring a truly remarkable experience in their special celebrations. Three rooms are carefully designed to suit business meetings and conference while the other two are perfect venues for social events including weddings, parties, anniversaries and other private gatherings.

dining options

Swiss-Café al fresco

Located on the ground floor, this is a contemporary style restaurant that features a modern seating with an open kitchen concept. The Café overlooks the swimming pool and its central location, makes it is the ideal place to enjoy our signature breakfast, grab a quick bite or a complete meal. The open kitchen concept serves a selection of Balinese, Asian and Western favorites.

Lagoon Pool Bar

The best place to chill at the pool and enjoy cool cock-and mocktails as well as delicious Asian and International bites.

management

Founded in 1987 and headquartered in Hong Kong, Swiss-Belhotel International is today recognised as one of the world's fastest-growing hotel management groups. Swiss-Belhotel International provides highly professional management services in all aspects of hotel, resort and serviced residences. Swiss-Belhotel International has six times been awarded Indonesia's Leading Global Hotel Chain 2010/2011, 2011/2012, 2012/1213, 2013/2014, 2014/2015 and 2015/2016 and Most Favourite 4-Star Hotel.



location

Swiss-Belresort Watu Jimbar is a 4-star international resort located in Sanur, Bali. Sanur's beautiful sandy beach is only a five-minute walk from the resort and we are close to a variety of restaurants, shops, entertainment venues and tourist attractions. Kuta and Legian are a just 20-minute drive away, while Ngurah Rai International Airport is a 20-minute drive. Watu Jimbar Resort offers a wonderful experience by providing attentive and friendly service for guests' comfort.

places of interest

- Sanur Beach. Hotel guests can enjoy a snooze under the sun on complimentary sun loungers and parasols on golden sandy Sanur beach just a short five-minute drive by shuttle away. Beach towels and shuttle transfer (1.5 km) are included. Unique in Bali, Sanur's beach features a 3 km long promenade including shopping and dining outlets. Guests can take an easy stroll along the promenade, rent a bicycle or simply book the free shuttle direct to the our beach spot.
- Sindhu Market, a one stop art market for Balinese handicrafts, sarongs and t-shirts.
- Kuta Beach, known by surfers around the world for its great surfing and long sandy beach.
- Jimbaran, well-known for its seafood stalls and glorious sunsets is one of Bali's 'must see' spots.

other fine hotels

Hefei • Wuxi • Taiyuan • Dongguan • Da Lat • Makati City • Kuantan • Ambon Bali • Balikpapan • Bandung • Banjarmasin • Batam • Cirebon • Jakarta Jayapura • Karawang • Kendari • Kupang • Malang • Makassar • Manado Manokwari • Medan • Merauke • Palangka Raya • Palu • Pangkalan Bun Pekanbaru • Samarinda • Semarang • Solo • Sorong • Surabaya • Tarakan Belitung • Berau • Bintan • Bogor • Cibubur • Cikande • Cikarang • Depok Jambi • Labuan Bajo • Luwuk • Pangkalpinang • Pontianak • Puncak Purwokerto • Singkawang • Tangerang • Yogyakarta • Sydney • Kuwait • Doha Seef • Erbil • Muscat • Riyadh • Bursa • Varna • Sharjah • Queenstown

HONG KONG • CHINA • VIETNAM • PHILIPPINES • MALAYSIA • INDONESIA
 BAHRAIN • IRAQ • KUWAIT • OMAN • QATAR • SAUDI ARABIA
 UNITED ARAB EMIRATES • AUSTRALIA • NEW ZEALAND
 BULGARIA • TURKEY • GEORGIA • GREECE