

HÔTEL ★ ★ PARIS



WWW.HOTELVICTORIAPARIS.COM



HÔTEL ★ ★ PARIS

Hello!

Thank you for choosing to receive news and information on our establishment through the PDF Brochure service.

Through this service together we can help to protect the environment.

Our official website is regularly updated to enable you to make the most of the best offers and the best guaranteed rates available on the internet.

If you do not have access to the internet at work or at home, log on to our website access by mobile phone:

<http://mobile.hotelvictoriaparis.com>

See you soon,



HÔTEL ★ ★ PARIS

WELCOME

Welcome

Charming 2* hotel situated in the 9th arrondissement of Paris, in a lively area surrounded by restaurants, theatres and shops. Next to well known monuments and museums such as the Opera Garnier, the Louvre museum, Palais Royal...and a few minutes walk from Galeries Lafayette and Printemps (department stores)

Hotel Victoria welcomes you all year for your business and/or tourism purposes.

- 2 Star hotel
- Situated between the Opera Garnier and Place Vendôme
- 103 Rooms
- Small "patio style" garden
- Free Internet Connexion
- Flat screen TV
- Cable and satellite channels
- Direct telephone line
- Elevators
- Private Parking upon request (subject to availability)



In a few lines

The hotel counts 103 rooms on 4 floors. All of the rooms face a small quiet street or the interior courtyard providing you with a quiet setting.

The reception desk is open 24/24 hours. A few parking spaces are available in front of the hotel and breakfast can be served in your room upon request.

Special Stay Offers



>> [Booking on line](#)



ROOMS

Single and Double Room

Each room is equipped with single or double beds, a desk, satellite flat screen television and a private bathroom with basic amenities.

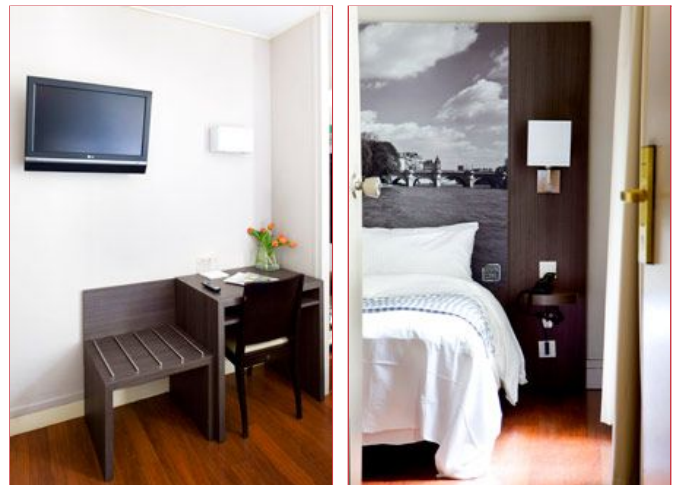
Our rooms are decorated in a contemporary style, in light and dark tones with modern furniture. A black and white photography of Paris covers the bed headboard, which gives the room a little French touch. Wooden flooring completes it all for your comfort.



Triple Room

Our triple rooms have 3 single beds or 1 double bed and 1 single bed. These rooms are larger and also have a desk, satellite flat screen television and a private bathroom with basic amenities.

Our rooms are decorated in a contemporary style, in light and dark tones with modern furniture. A black and white photography of Paris covers the bed headboard, which gives the room a little French touch. Wooden flooring completes it all for your comfort.





HÔTEL ★ ★ PARIS



Breakfast

A breakfast buffet is served from 7H00 to 10h00 am. Upon request your breakfast can be served in your room.

The buffet is composed of fresh croissants, baguette, cereals, milk, yoghurt, hot drinks (coffee, tea and chocolate) and orange or grapefruit juice.

Special Stay Offers



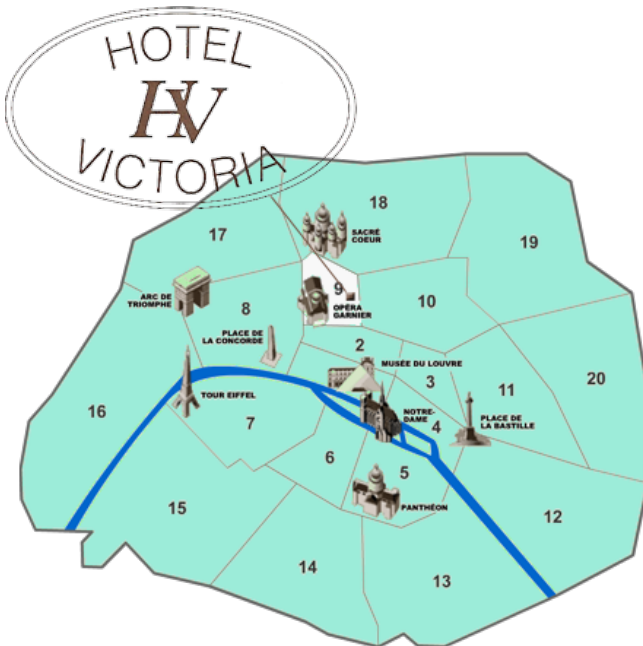
>> [Booking on line](#)



HÔTEL ★ ★ PARIS

LOCATION & ACCESS MAP

Location



How to get there ?

The hotel is situated 10 minutes walk from the shopping area (Galeries Lafayette, Printemps, Zara, H&M...), from the Opera Garnier or 15 minutes from Place Vendôme.

By car :

G PS coordinates :
Lat : 48.8719241
Long : 2.34.3327

Exit from the ring road - Porte de la Chapelle
Take Avenue de la Porte de la Chapelle
Take rue de la Chapelle
Take rue Max Dormoy
Turn right on to Boulevard de la Chapelle
Turn left on to Boulevard Magenta
Continue on the rue de Maubeuge
Turn left on to rue du Faubourg Poissonnière
Continue straight ahead and turn right on to Boulevard Poissonière
Turn the 2nd street on your right: Rue du Faubourg Montmartre
La Cité Bergère is situated in front of the "Chez Chartier" restaurant (rue du faubourg Montmartre).
The hotel is situated on 2 bis cite Bergère.

www.viamichelin.fr/

Google maps :
[Click here](#)

Public transports :

Metro: "Grands Boulevards" (lines 8 and 9)
Bus N° / 20 – 39 – 48 – 67 – 74 AND 85

www.ratp.fr/

By plane :

CHARLES DE GAULLE AIRPORT

BY BUS:
Take « Roissy Bus » and get off at Opera station (rue Scribe). From Opéra take métro line 8 to "Grands Boulevards".

BY RER:
Take RER B to " Gare du Nord", then metro line number 4 – change at "Strasbourg-Saint Denis" for line 8 or 9. Get off at the métro stop "Grands Boulevards"

ORLY AIRPORT

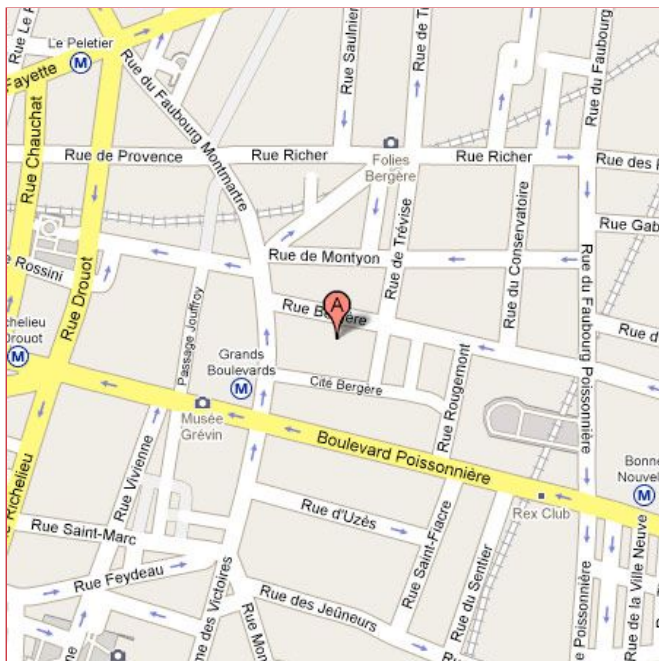
Bus Air France to " Invalides", where you take the metro line 8 to the stop "Grands Boulevard"

www.adp.fr/

By train :

Gare du Nord (Eurostar et Thalys), 10 minutes by métro
Gare de l'Est, 10 minutes by métro
Garde de Lyon, 15 minutes by métro
Gare Montparnasse, 25 minutes by métro
Gare d'Austerlitz, 25 minutes by métro

www.voyages-sncf.fr/



HOTEL VICTORIA
2 BIS CITE BERGERE
75009 PARIS

Tel : +33147702001
Fax : +33148010843
Email : info@hotelvictoriaparis.com
Website : <http://www.hotelvictoriaparis.com>



HÔTEL ★ ★ PARIS

Distances

To go to the main cultural sites, museums and monuments of Paris from the hotel	Time (in minutes)	
	Walking	Metro
PARIS RIGHT BANK		
Opéra Garnier	7	5
Shopping Centers (Galeries Lafayette, Printemps)	7	5
Place Vendôme	10	13
Champs-Élysées	25	10
Louvre	15	10
Ile de la Cité : Notre-Dame / Sainte-Chapelle / Conciergerie	30	15
Ile Saint-Louis	33	15
Sacré Coeur	15	20
La Défense (business centre)		25
PARIS LEFT BANK		
Tour Eiffel		20
Musée d'Orsay		20
Saint-Germain des Prés		20
Quartier Latin		25
Porte de Versailles : Parc des Expositions		35



HÔTEL ★ ★ PARIS

RATES & SPECIAL OFFERS

Special Stay Offers



>> [Booking on line](#)

Rates

2011	
Single room:	75 €
Double room:	81 €
Triple room:	93 €
Breakfast :	06 €
Taxes :	included

Rates on Fairs and Public Holidays 2010

Single room:	93 €
Double room:	96 €
Triple room:	112 €

Rates on Fairs and Public Holidays 2010 (first and last date included)

From December 30th, 2010 until January 2nd 2011 – "New Year"
From April 22nd, until April 25th, 2011 - Easter
From June 19th, until June 25th, 2011– "Air Show"
From September 2nd until September 5th 2011 – "Prêt à Porter"
From September 13th, until September 16th, 2011 – "Première Vision"

From December 30th, 2011 until January 2nd, 2012 "New Year"

We accept traveller's cheques and credit cards: visa, american express, diners club.

>> [Click here to book](#)

Standard Terms and Conditions of Sale

Cancellation fees :

- No cancellation fee is charged if you cancel before noon (12h00) local time
- After noon (12h00), one night will be charged.

Check in time :

- Arrival : 13h30
- Departure : 12h00

Child Policy:

- Child under 12 years is free of charge if sleeping in parents' room.
- Breakfast is charged for the child (on request only)

All reservations must be guaranteed by a credit card valid at the date of your arrival.



HÔTEL ★ ★ PARIS

TOURISM & ACTIVITIES

Between the Opera Garnier and Place Vendôme

Ideally situated in the heart of the capital, you can easily visit the main tourist attractions in Paris: Opera Garnier, the Louvre, le Jardin des Tuileries, la Place Concorde, la place Vendôme, Eiffel Tower, les Invalides...

Not to forget shopping at the main department stores such as Galeries Lafayette and Printemps.

Outdoor Activities

Monuments :
Tour Eiffel, Arc de Triomphe, Notre-Dame, Sacré Coeur...

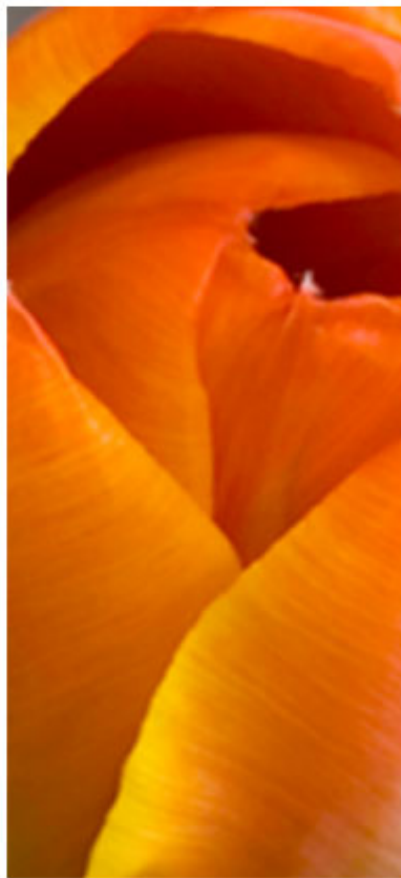
Museums :
Louvre, Orsay, d'Art Moderne G. Pompidou, Rodin, Jacquemart-André...

Gardens :
Tuileries, Luxembourg, Palais Royal, Parc Monceau...

Shopping :
Grands magasins, Faubourg Saint-Honoré, Place Vendôme...

Concerts :
Opéra Garnier, Opéra Bastille, Olympia, Salle Pleyel, POPB...





HÔTEL ★ ★ PARIS

HOTEL VICTORIA
2 BIS CITE BERGERE
75009 PARIS
Tel : +33147702001
Fax : +33148010843
Email : info@hotelvictoriaparis.com
Website : <http://www.hotelvictoriaparis.com>

SAS VICTORIA HOTEL
SIRET 56201693100015 APE 5510Z