



"ARRIVE AS A GUEST, DEPART AS A FRIEND AND RETURN AS FAMILY"

NAME OF RESORT : SAMABE BALI SUITES & VILLAS
 RESORT ADDRESS : JL. PURA BARONG-BARONG SAWANGAN,
 NUSA DUA SELATAN, BALI, 80363,
 INDONESIA
 TELEPHONE : + 62 361 846 8633
 FAX : + 62 361 846 8632
 GENERAL EMAIL : mail@samabe.com
 RESORT WEBSITE : www.samabe.com
 GENERAL MANAGER : RALF LUTHE
 RESORT CATEGORY : 5-STAR LUXURY BEACH RESORT

CHECK-IN TIME : 14.00 HRS
 CHECK-OUT TIME : 12.00 HRS
 CREDIT CARD : VISA/MASTER/AMEX/
 ACCEPTED : JCB/DINERS
 OPENING DATE : 01 JUNE 2013

LOCATION : SOUTHERN PART OF NUSA DUA
 INTERIOR DESIGNER : MANNY SAMSON & ASSOCIATES
 MASTER PLAN ARCHITECT : BENSLEY DESIGN STUDIO, THAILAND
 ACCOMODATION : 81 LUXURIOUS SUITES & VILLAS; 39 SUITES,
 7 PENTHOUSE VILLAS, 35 FREE STANDING VILLAS
 NUMBER OF FLOORS : 4TH FLOORS OF SUITES
 TOTAL AREA : 8 HECTARES
 DISTANCE : FROM NGURAH RAI BALI'S INTERNATIONAL
 AIRPORT TO SAMABE BALI SUITES & VILLAS
 APPROX. 17 KM

POINT OF INTEREST

BALI GOLF & COUNTRY CLUB	: 3.8 KM	SEMINYAK	: 29 KM
BICC	: 5.5 KM BY PANTAI MENGIAT, 7 KM BY JL. SILIGITA	SANUR	: 31.5 KM
ULUWATU (TEMPLE)	: 17 KM	TANAH LOT	: 38.5 KM
KUTA	: 18 KM	UBUD	: 52 KM
BENOA HARBOR	: 24 KM USING BYPASS NGURAH RAI	PADANG BAI HARBOR	: 70 KM
		BEDUGUL	: 73.5 KM





FACT SHEET

- GENERAL FACILITIES & SERVICES -

FACILITIES & SERVICES	AVAILABILITY
FINE DINING	✓
IN - VILLA DINING	✓
24 HOURS BUTLER SERVICE	✓
FREE WI-FI	✓
SWIMMING POOL	✓
FITNESS & GYM TRACK	✓
WATER SPORTS	✓
KID'S CLUB	✓
BABYSITTING SERVICE	✓
SPA	✓
IN-VILLA MASSAGE	✓
COOKING CLASS	✓
LIBRARY	✓
MINI CINEMA	✓
CAR RENTAL	✓
BICYCLES	✓
LAUNDRY FACILITIES	✓
ELECTRONIC CART	✓
LUGGAGE STORAGE	✓
PRIVATE BEACH (ACCESSIBLE BY STAIRCASE)	✓
MICE, EVENT & WEDDING VENUES	✓
WEDDING & EVENT SERVICE	✓
MARRIAGE PROPOSAL IDEAS	✓
CULTURAL & LEISURE ACTIVITIES	✓
SAMABE HOSPITALITY LOUNGE	✓
ON CALL MEDICAL ASSISTANCE	✓



- A : LOBBY AREA, TE. JA. CO, REMPAH-REMPAH HOSPITALITY LOUNGE
- B : STAGE, LUMBA-LUMBA KID'S CLUB
- C : C1 GALANGAL SPA, C2 CANANG ROOM, C3 TIMELESS
- D : VILLA 33 - 41, ROYAL RESIDENCE
- E : VILLA 16 - 18
- F : VILLA 11 - 15
- G : VILLA 19 - 32
- H : VILLA 43 - 46
- I : EAST SUITES
- J : WEST SUITES

- K : CRYSTAL BLUE
- L : RING OF FIRE
- M : MAIN POOL
- N : GYM
- O : WAY TO THE BEACH
- P : MOTORCYCLE PARKING AREA
- Q : WANTILAN COOKING CLASS
- R : CAR PARKING AREA
- S : PEARL CHAPEL
- T : OCEAN
- U : ENTRANCE

FACILITIES & SERVICES	AVAILABILITY
AIR CONDITIONING	✓
LCD FLAT SCREEN TV 42 INCH	✓
IN-ROOM PERSONAL SAFE	✓
I-POD DOCKING STATION	✓
PILLOWS MENU SELECTION	✓
CUSTOM-DESIGNED MATTRESSES	✓
DVD PLAYER	✓
TV CABLE	✓
ADJUSTABLE THERMOSTAT	✓
SEPARATE SHOWER/BATHTUB	✓
IN-ROOM TELESCOPE (SUITE & PENTHOUSE ONLY)	✓
IDD TELEPHONE	✓
HAIRDRYER	✓
PRIVATE MINI BAR	✓
COMPLIMENTARY COFFEE & TEA	✓
BUTLER SERVICE	✓
24-HOURS HOUSEKEEPING	✓
WIFI/LAN CONNECTION	✓
IRON ON REQUEST	✓
IRON BOARD ON REQUEST	✓
ELECTRONIC LOCKS	✓
ELECTRONIC SMOKE DETECTOR	✓
SIGNATURE AROMA TOILETRIES	✓
ELECTRICAL CART SERVICE	✓
CONVENIENT ELECTRICAL OUTLETS	✓



FACT SHEET

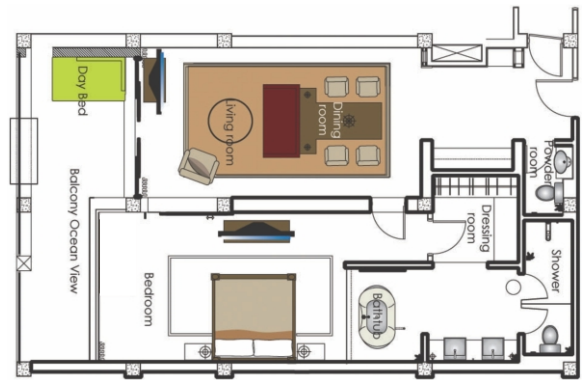
- ROOM CATEGORIES -

OCEAN FRONT SAMABE SUITE

24-hour butler, private balcony, complimentary Wi-Fi, ocean view, telescope

With unsurpassed ocean views and attention to detail in its design, the 135 square meters Ocean Front Samabe Suite represents true luxury in holiday accommodation. Each suite includes a king size bed, a separate living room and a balcony with a large sitting and outdoor dining area wrapped in a picturesque panorama of the Indian Ocean. It is also supplied with a telescope, if you feel like some stargazing in the night.

- Beds : 1x King Size Bed (200 x 200 cm)
- Occupancy : 2 Adults + 2 Children, or 3 Adults + 1 Children
- View : Ocean Front
- Location : On the 1st and 2nd floor of West Wing (only)
- Size : 135 square meters

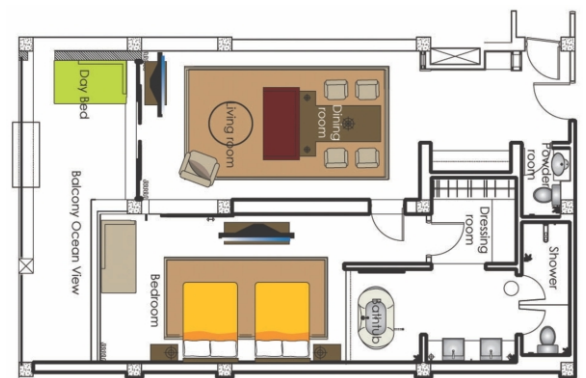


OCEAN FRONT FAMILY SUITE

24-hour butler, private balcony, complimentary Wi-Fi, ocean view, telescope

The spacious Ocean Front Family Suites are a comfortable choice for families, each with cozy living area separate from the bedroom which contains two queen size beds. Every suite has a generous balcony with a large sitting and dining area with uninterrupted ocean views. Have fun watching the stars at night and keep a look out for a shooting star through a telescope provided in every suite.

- Beds : 2x Queen Size Bed (160 x 200 cm)
- Occupancy : 3 Adults + 1 Children, 2 Adults + 3 Children, or 2 Adults + 2 Children
- View : Ocean Front
- Location : On the 1st or 2nd floor, East Wing or West Wing
- Size : 135 square meters





FACT SHEET

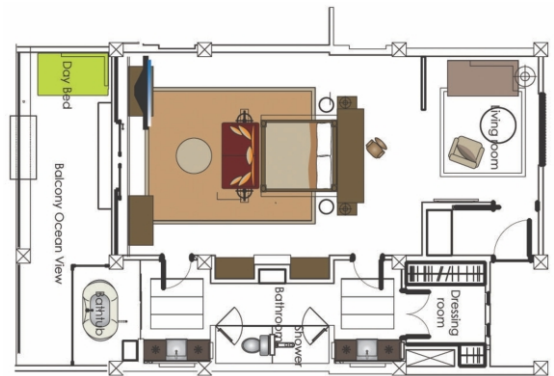
- ROOM CATEGORIES -

OCEAN FRONT HONEYMOON SUITE

24-hour butler, private balcony, complimentary Wi-Fi, ocean view, telescope

The Ocean Front Honeymoon Suites represent luxury and romance, all with uninterrupted views of the Indian Ocean. Enjoy romantic bath relishing the breathtaking panorama of the calming seas with the beauty of the ocean and the sky revealed right before your eyes. Each of the Ocean Front Honeymoon Suites has a generous balcony with a large sitting. Gaze at the starry night sky and keep a look out for a shooting star with a telescope provided in every suite.

- Beds : 1x King Size Bed (200 x 200 cm)
- Occupancy : 2 Adults + 1 Children
- View : Ocean Front
- Location : On the 1st and 2nd floor, East Wing or West Wing
- Size : 135 square meters

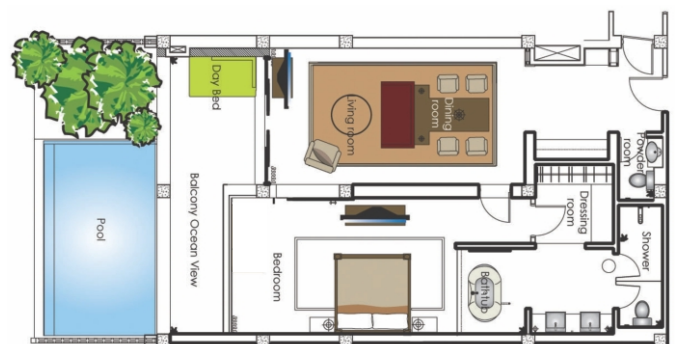


OCEAN FRONT SAMABE POOL SUITE

24-hour butler, private pool, private balcony, complimentary Wi-Fi, ocean view, telescope

Supreme leisure and luxury, the 180 square meters Ocean Front Samabe Pool Suite is just perfect to spoil yourself and experience a holiday of a lifetime. It features a king size bed, separate living room, a balcony with an outdoor dining area and a private swimming pool overlooking turquoise waters of the Indian Ocean. A telescope is included for late night stargazing.

- Beds : 1x King Size Bed (200 x 200 cm)
- Occupancy : 3 Adults + 1 Children or 2 Adults + 2 Children
- View : Ocean Front
- Location : On the ground floor of West Wing (only)
- Size : 180 square meters (including a 6 x 3 meters private pool and garden)





FACT SHEET

- ROOM CATEGORIES -

OCEAN FRONT FAMILY POOL SUITE

24-hour butler, private pool, private balcony, complimentary Wi-Fi, ocean view, telescope

The stylish Ocean Front Family Pool Suites with two queen size beds and separate living room provide ample of space to accommodate the whole family. Each suite comes with a private pool of 6 x 3 meters and a balcony with sitting and dining with a flawless oceanic panorama. Family may have fun with a telescope provided in the room enjoying the stars at night.

- Beds** : 2x Queen Size Bed (160 x 200 cm)
- Occupancy** : 3 Adults + 1 Children, 2 Adults + 3 Children or 2 Adults + 2 Children
- View** : Ocean Front
- Location** : On the Ground Floor, East Wing or West Wing.
- Size** : (including a 6 x 3 meters private pool and garden)

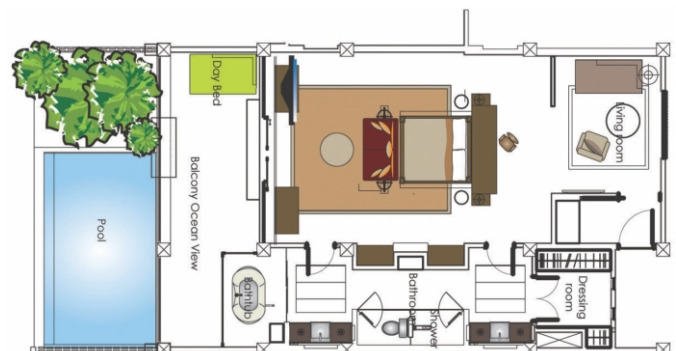


OCEAN FRONT HONEYMOON POOL SUITE

24-hour butler, private pool, private balcony, complimentary Wi-Fi, ocean view, telescope

The sumptuous, elegant Ocean Front Honeymoon Pool Suites boast magnificent views of the Indian Ocean and a private swimming pool. Charming suites feature glass-surround bathrooms overlooking the ocean. A telescope is provided in every suite for guests to gaze at the starry sky in the night. Take a dip in the private pool with your loved one and enjoy an intimate romantic holiday.

- Beds** : 1x King Size Bed (200 x 200 cm)
- Occupancy** : 2 Adults + 1 Children
- View** : Ocean Front
- Location** : On the Ground Floor, East Wing or West Wing
- Size** : 180 square meters (including a 6 x 3 meters private pool and garden)





FACT SHEET

- ROOM CATEGORIES -

ONE BEDROOM FAMILY GARDEN POOL VILLA

24-hour butter, private terrace, private pool, partial ocean view, complimentary Wi-Fi

Measuring 265-square meter, One-Bedroom Family Garden Pool Villa is an elegant and contemporary accommodation that puts forward privacy and comfort feel. Each villa includes a luxurious King Size bed with custom-designed mattress. The walk-through dressing room leads to a spacious bathroom with a free-standing bath-tub, toilet room, and indoor shower. A spacious 8 x 4 meter pool and beautiful garden views are absolute indulgence.

- Beds : 1x King Size Bed (200 x 200 cm)
- Occupancy : 2 Adults + 2 Children or 3 Adults + 1 Child
- View : Garden view
- Location : Free Standing
- Size : 265 square meters (with 8 x 4 meters private pool)



ONE-BEDROOM OCEAN POOL VILLA

24-hour butter, private terrace, private pool, partial ocean view, complimentary Wi-Fi

Measuring 265-square meters. One-Bedroom Ocean Pool Villa is an elegant and contemporary accommodation that puts forward privacy and comfort feel. Each villa includes a luxurious King Size bed with custom-designed mattress. The walk-through dressing room leads to a spacious bathroom with a free-standing bath-tub, toilet room and indoor shower. A spacious 8 x 4 meters pool and beautiful ocean views are absolute indulgence.

- Beds : 1x King Size Bed (200 x 200 cm)
- Occupancy : 3 Adults + 1 Children, 2 Adults + 3 Children or 2 Adults + 2 Children
- View : Partial Ocean Views over Balinese thatched roof
- Location : Free Standing
- Size : 265 square meters (with 8 x 4 meters private pool)



TWO BEDROOM FAMILY GARDEN POOL VILLA

24-hour butter, private terrace, private pool, partial ocean view, complimentary Wi-Fi

Two-Bedroom Family Garden Pool Villa includes a master bedroom with 1 King Size bed and the second bedroom with two Single beds, all with custom-designed mattresses, in a 298-square meter area. The luxury Bali villa facilities include WiFi/LAN connection, signature aroma toiletries, iPod docking station, 32" Flat Screen LCD TV in each bedroom and 42" in your living room, and a DVD player with a collection of movies from our library.

- Beds : 1x King Size Bed (200 x 200 cm) in Master Bedroom, 2 x single Bed (120 x 200 cm) in the Second Bedroom
- Occupancy : 4 Adults + 2 Children
- View : Garden view
- Location : Free Standing
- Size : 298 square meters (with 8 x 4 meters private pool)



TWO-BEDROOM OCEAN POOL VILLA

24-hour butter, private terrace, private pool, partial ocean view, complimentary Wi-Fi

Two-Bedroom Ocean Pool Villa includes a master bedroom with 1 King Size bed and the second bedroom with two single beds, all with custom-designed mattresses, in a 298-square meter area. The luxury Bali facilities include WiFi/LAN connection, signature aroma toiletries, iPod docking station, 32" Flat Screen TV in each bedroom and 42" in your living room, and a DVD player with a collection of movies from our library.

- Beds : 1x King Size Bed (200 x 200 cm) in Master Bedroom, 2 x single Bed (120 x 200 cm) in the Second Bedroom + 1 Day Bed
- Occupancy : 4 Adults + 1 Children or 5 Adults
- View : Partial Ocean Views over Balinese thatched roof and resort garden
- Location : Free Standing
- Size : 298 square meters (with 8 x 4 meters private pool)





FACT SHEET

- ROOM CATEGORIES -

TWO-BEDROOM PENTHOUSE POOL VILLA

24-hour butter, private terrace, private infinity pool, full ocean view, complimentary Wi-Fi, telescope

The Two-Bedroom Penthouse Pool Villa nestles on the top of the suites buildings, representing the very best in the luxury Bali beach resort. Every penthouse measures a generous 304-square meter and blessed with unparalleled views of the ocean. Indulgent, intimate, romantic and totally private, the interior of each villa reflects a discerning taste and artistic flair - a harmonious blend of contemporary style with touches of Balinese craftsmanship to create a chic balance of East-meets-West.

- Beds : 1x King Size Bed (200 x 200 cm) in Master Bedroom, 2 x Single Bed (120 x 200 cm) in the Second Bedroom
- Occupancy : 4 Adults + 1 Children or 5 Adults
- View : Full Ocean
- Location : On top floor cliff suites building
- Size : 304 square meters (with 5.5 x 4 meters private pool)

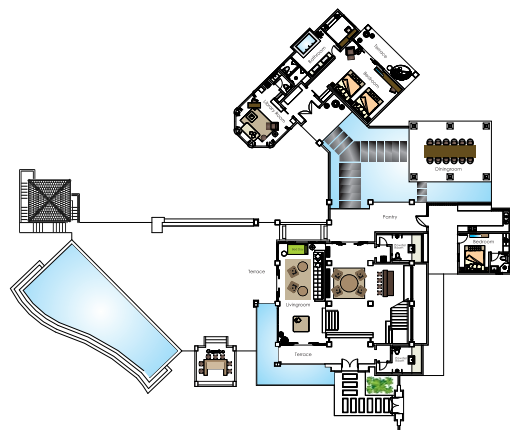


ROYAL SAMABE RESIDENCE

24-hour butter, private terrace, private pool, partial ocean view, complimentary Wi-Fi

This palatial two-storey Royal Samabe Residence, complemented by high-tech modern amenities and glorious ocean vistas, will quench your thirst for cliff-top island living. Royal Samabe Residence, measuring 1,500 square meters, with its two bedrooms, two master bathrooms, living and dining room, bar, and three guest powder rooms, is ideal for entertaining kings and queens heads of states and families who appreciate the finest in life. With all top facilities, Royal Samabe Residence is also a resourceful site for private events and parties.

- Beds : 1x King Size Bed (200 x 200 cm) in Master Bedroom, 2 x single Bed (120 x 200 cm) in the Second Bedroom
- Occupancy : 4 Adults + 2 Children or 6 Adults
- View : Panoramic Views of the Ocean
- Location : Adjacent to Pearl Chapel
- Size : 1,500 square meters with a private pool





Location : Next to lobby area
Hours of operation : 12.00 – 21.00 Hrs
No. of treatment rooms : 2 Spa Treatment Rooms

Rejuvenate your body and mind, and find your balance at Galangal Spa at Samabe. Our two spa treatment rooms are located in the building next to the lobby. Galangal Spa offers a wide variety of treatments and massages to suit your need. After treatment, relax in the outdoor sunken tub filled with flower petals. Incense sticks and lit scented candles by the tub help soothe your mind. Organic juice or Herbal Tea is offered with spa retreat programs. Leave your spa room in good spirit!



FACT SHEET

- PUBLISHED RATES -

CATEGORY	PUBLISHED RATE*
OCEAN FRONT SAMABE SUITE	USD 1,150++/SUITE/NIGHT
OCEAN FRONT FAMILY SUITE	USD 1,150++/SUITE/NIGHT
OCEAN FRONT HONEYMOON SUITE	USD 1,150++/SUITE/NIGHT
OCEAN FRONT SAMABE POOL SUITE	USD 1,350++/SUITE/NIGHT
OCEAN FRONT FAMILY POOL SUITE	USD 1,350++/SUITE/NIGHT
OCEAN FRONT HONEYMOON POOL SUITE	USD 1,350++/SUITE/NIGHT
ONE BEDROOM FAMILY GARDEN POOL VILLA	USD 1,500++/VILLA/NIGHT
ONE BEDROOM OCEAN POOL VILLA	USD 1,820++/VILLA/NIGHT
TWO BEDROOM FAMILY GARDEN POOL VILLA	USD 2,480++/VILLA/NIGHT
TWO BEDROOM OCEAN POOL VILLA	USD 2,800++/VILLA/NIGHT
TWO BEDROOM PENTHOUSE POOL VILLA	USD 3,740++/VILLA/NIGHT
ROYAL SAMABE RESIDENCE	USD 6,000++/VILLA/NIGHT

* ROOM RATES ARE SUBJECT TO 11% GOVERNMENT TAX & 10% SERVICE CHARGE, INCLUSIVE OF "LIMITED PRIVILEGES (STANDARD BENEFIT)" AND RETURN AIRPORT TRANSFER.



FACT SHEET

- ROOM BENEFIT -

LIMITED PRIVILEGES (STANDARD BENEFITS)	UNLIMITED PRIVILEGES (LUXURY ALL INCLUSIVE)*
<ol style="list-style-type: none"> 1. Welcome drink and cold towel upon check in 2. Daily full breakfast which can be taken either at our main restaurant or room service and can be taken at any time/place/hours of the day (one breakfast per day) 3. Daily free flow of fresh fruit or vegetable juices, soft drinks and coffee + tea either in the room or at any opening outlets 4. Daily free mini bar with standard brands and replenish one time per day 5. Daily afternoon tea either in the room or opening outlets from 3 to 5 pm 6. Daily turn down service 7. Daily fresh fruit platter 8. Complimentary in-room wireless internet access 9. Access to all facilities and scheduled activities (such as yoga and tai chi) 10. Samabe Original Gift 11. 24 hour Butler Service 12. Complimentary use of non motorized water sports (catamaran, kayak and/or windsurfer) 	<ol style="list-style-type: none"> 1. All of the benefits under Limited Privileges plus 2. Daily cocktail hours including beers, house wines and standard spirits from 17.00 hours until 24.00 hours (midnight) 3. Daily 24-hours a la carte selection of Gourmet / Organic / Mediterranean or Balinese / Cuisine served either in your suite or villa or anywhere within the resort (Except Gala Dinner on 31 Dec) 4. Daily one Samabe signature activity of your choice 5. Unlimited laundry service (except dry cleaning) 6. Balinese food experience including private Rijstaffel or Suckling Pig Dinner at your suite or villa per stay (min. stay of 3 night or more) 7. Daily 6 hours complimentary use of meeting room and facilities (for up to 8 persons) - min stay of 3 night or more) 8. Late check out until 16.00 hours <p style="text-align: center;">*SURCHARGE IS APPLIED FROM THE APPLICABLE ROOM RATES</p>

UNIQUE BREAKFAST: ANYTIME, ANYWHERE WITHIN THE RESORT



FACT SHEET

- DINING & ENTERTAINMENT -

1. REMPAH-REMPAH MAIN DINING ROOM



Location : next to the lobby / main area
 Hours of operation : 06.00 – 23.00 Hrs
 Seating capacity : 110 persons (outdoor & indoor)
 Concept : Rempah – rempah (Rich Indonesian Spices) is the main dining of the resort. Designed with rich stone and timber with stunning backdrop of lush greenery and water ponds and proudly displaying the richness of various Indonesian Spices. Opens for all day dining serving Balinese, Asian and Mediterranean Cuisine. Private dining area called “Banten” is also available for private function for up to 24 persons.

2. CRYSTAL BLUE OCEAN GRILL



Location : By the pool side overlooking to the spectacular Indian Ocean
 Hours of operation : 11.00 – 23.00 Hrs
 Seating capacity : 65 persons
 Concept : Open Air Style Restaurant with Balinese Thatched Roof specializing in fresh seafood, sushi and succulent steaks. The largest individual seating area is 20-seat open air teakwood deck.

3. TE.JA.CO LOUNGE & BAR



Location : In the main building overlooking to the beach and Indian Ocean
 Hours of operation : 11.00 – 02.00 Hrs
 Seating capacity : 40 persons
 Concept : Lobby Lounge cultivating a rich modern Asian Ambience serving a uniquely 3 elements: TE as traditional tea, JA as traditional Indonesian Herbal Drinks and CO as coffee with selection of Indonesian Coffee and a variety of Indonesian Snacks to accompany the drinks.

4. RING OF FIRE POOL BAR



Location : At the pool side overlooking the spectacular Indian Ocean
 Hours of operation : 10.00 – 23.00 Hrs
 Seating capacity : 21 persons
 Concept : Casual bar catered for alcoholic and non alcoholic drinks selection while enjoying the stunning ocean view and the pool. The romantic torches in the evening really sets this bar to be the place for having pre or after dinner drinks.



FACT SHEET

5. IN-ROOM DINING

Location : In the privacy of suite or villa
 Hours of operation : 24-Hours Daily
 Seating capacity : 81 suites and villas
 Concept : F&B service to all rooms serving international & local cuisines

LEISURE FACILITIES

6. FITNESS @ SAMABE



Location : Next to poolside featuring state of the art exercise equipment
 Hours of operation : 24-Hours Daily

7. "TIMELESS BY KOZA" BOUTIQUE & GALLERY



Location : Next to lobby area
 Hours of operation : 11.00 – 23.00 Hrs
 Concept : Unique boutique offering wide variety of art, handicraft and Memorabilia resort items sourced within Indonesia and other Asian countries exclusively for SAMABE Bali Suites & Villas

NO	TIME & DURATION	VENUE/ MEETING POINT	REMARKS	MONDAY	TUESDAY	WEDNESDAY	THURSDAY	FRIDAY	SATURDAY	SUNDAY
1	07.15 (60 MINUTES)	LOBBY	FREE	FITNESS WALK (GM)	-	FITNESS WALK (GM)	-	FITNESS WALK (GM)	-	
2	09.00 (60 MINUTES)	REMPAH-REMPAH	FREE	FRUITS CARVING (CHEF & TEAM)	-	FRUITS CARVING (CHEF & TEAM)	-	FRUITS CARVING (CHEF & TEAM)	-	
2	09.00 (60 MINUTES)	CHAPEL BASEMENT	CHARD FOR PRIVATE LESSON	-	YOGA	YOGA	YOGA	YOGA	YOGA	
2	10.30 (90 MINUTES)	LOBBY	CHARD FOR LIMITED GUEST	-	-	VILLAGE SAFARI TOUR	-	VILLAGE SAFARI TOUR	VILLAGE SAFARI TOUR	
2	11.00 (60 MINUTES)	SAMABE HOSPITALITY LOUNGE	FREE	-	BALINESE CULTURE LESSON	-	BALINESE CULTURE LESSON	-	-	
2	11.15 (90 MINUTES)	WANTILAN	FREE	-	-	BALINESE COOKING CLASS (CHEF & TEAM)	-	BALINESE COOKING CLASS (CHEF & TEAM)	-	
2	13.00	AROUND RESORT AREA	CHARD FOR LIMITED GUEST	BALINESE COSTUME PICTURE TAKING	BALINESE COSTUME PICTURE TAKING	BALINESE COSTUME PICTURE TAKING	BALINESE COSTUME PICTURE TAKING	BALINESE COSTUME PICTURE TAKING	-	
2	14.00 (60 MINUTES)	WANTILAN	FREE	BAJIK PAINTING	BALINESE OFFERING LESSON	WOOD CARVING	-	BALINESE OFFERING LESSON	WOOD CARVING	
2	16.00 (60 MINUTES)	LOBBY	FREE	-	GUIDED VILLAGE BICYCLE TOUR	-	GUIDED VILLAGE BICYCLE TOUR	-	-	
2	16.00 (60 MINUTES)	FITNESS CENTER	CHARD FOR PRIVATE LESSON	-	-	-	-	-	BALINESE DANCE LESSON	
2	17.00 (60 MINUTES)	LOBBY	FREE	-	-	-	-	-	FITNESS WALK (GM)	

(*) SUBJECT TO CHANGE



FACT SHEET

- WEDDING AT SAMABE -

WEDDING AT PEARL CHAPEL



The contemporary majestic glass wedding chapel is blessed with a breathtaking 180-degree view of the Ocean. Walk on the illuminated bridal walkway to the altar and exchange your vows.

1. Maximum capacity is up to 80 guests.
2. Pearl Chapel is available for a wedding ceremony at your preferred time.

INCLUSIONS:

1. 2 hours exclusive use of wedding ceremony up to 20 guests at Pearl Chapel
2. English speaking celebrant or Christian priest (non legal)
3. Your personal Romance Coordinator
4. Samabe signature fresh flower chapel decoration, including 8 standing fresh flowers, an altar table with flower arrangement, flower shower, flower aisle and wedding signage
5. Bridal bouquet for bride and boutonniere for Groom
6. Samabe signature dry ice
7. Samabe wedding toast mocktails and cold towels for up to 20 guests upon arrival
8. Music accompaniment by a keyboardist and a singer in the wedding ceremony
9. Standard sound system, including two standard in-house speakers, 2 microphones and a CD/DVD player
10. Samabe wedding stationary, including wedding programs for up to 20 guests, commemorative certificate for couple and a guest book
11. Fragrant aroma burner
12. Samabe signature fan for wedding couple
13. A 2-night stay for bride and Groom in One Bedroom Ocean Pool Villa inclusive of the "Limited Privileges" (or Standard Benefits)

YOUR WEDDING VILLA AT SAMABE BALI SUITES & VILLAS



When a wedding means an intimate moment between you and your loved one, make it a memorable one at the privacy of your Samabe villa. Let the breezes and the sound of breaking waves (and a celebrant!) be your witnesses.

- The villa wedding is available for couple only (bride & groom) at your preferred time.

INCLUSIONS:

1. Basic signature fresh decoration at your private villa, including 2 standing fresh flowers, a flower table arrangement, flower aisle and wedding signage using tropical fresh frangipanis
2. Return airport transfers
3. English-speaking celebrant or Christian priest (non legal)
4. Your personal Romance Coordinator
5. Bridal bouquet for Bride and a boutonniere for Groom
6. Samabe wedding toast mocktails and cold towels for bride and Groom
7. Traditional "Rindik" Balinese music during the wedding ceremony
8. Samabe wedding stationary, including wedding programs and a commemorative certificate for couple
9. Samabe signature fan for wedding couple
10. Romantic dinner at the privacy of your villa privacy for bride and Groom, including a bottle of house wine
11. A one-tiered wedding cake
12. Samabe signature fan for wedding couple
13. A 2-night stay for bride and Groom in One Bedroom Ocean Pool Villa inclusive of the "Limited Privileges" (or Standard Benefits)



FACT SHEET

- WEDDING AT SAMABE -

WEDDING AT RING OF FIRE



This beautiful ring-shaped, open-air venue is a place to exchange your wedding rings in an upbeat and elegant way. Located by the poolside overlooking the spectacular Indian Ocean, your wedding will radiate joy and invite all around you to send their blessings.

- Maximum capacity for a wedding ceremony is up to 8 guests at your preferred time.

INCLUSIONS:

1. 2 hours exclusive use of Ring of Fire for a wedding ceremony for up to 8 guests
2. English speaking celebrant or Christian priest (non legal)
3. Your personal Romance Coordinator
4. Basic signature fresh flower decoration, including 2 standing fresh flowers, a flower table arrangement, flower aisle, flower shower and wedding signage using fresh tropical frangipanis
5. Bridal bouquet for bride and boutonniere for Groom
6. Samabe wedding toast mocktails and cold towels for Bride and Groom
7. Traditional "Rindik" Balinese music during the wedding ceremony
8. Samabe wedding stationary, including wedding programs for up 8 guests, commemorative certificate for couple and a guest book
9. Samabe signature fan for wedding couple
10. A 2-night stay for bride and Groom in One Bedroom Ocean Pool Villa inclusive of the "Limited Privileges" (or Standard Benefits)

SAMABE UNLIMITED PRIVILEGES WEDDING



INCLUSIONS:

1. Exclusive use of Pearl Chapel for wedding ceremony at your preferred time
2. Usage of TE.JA.CO and Rempah-Rempah for welcome Cocktail & Dinner from 19.00 until 23.00 hours (joint with public but with separate rate)
3. Exclusive use of Royal Samabe Residence for Wedding Cocktail & Dinner from 19.00 hours until 23.00 hours
4. Your personal Romance Coordinator
5. English speaking-celebrant or Christian priest (non-legal)
6. Joining buffet dinner at Rempah-Rempah Main Dining Room for Welcome Dinner with a private area setup for up to 45 guests (for exclusive private set up, it can be arranged with applicable surcharge)

7. Private buffet dinner at Royal Samabe Residence for Wedding Dinner for up to 45 guests
8. Samabe signature fresh flower chapel decoration, including standing fresh flowers, an altar table with flower arrangement, 2 candelabra arrangements, flower shower, flower aisle and wedding signage
9. Bridal bouquet for Bride and a boutonniere for Groom
10. Samabe signature dry ice
11. Samabe welcome drink mocktails and cold towels for up to 45 guests upon arrival
12. Standard sound system, including 2 standard in-house speakers, 2 microphones, a CD/DVD player and 3000 watt electricity at Pearl Chapel
13. Samabe wedding stationery, including wedding programs for up to 45 guests, commemorative certificate for couple and a guest book
14. Fragrant aroma burner
15. Samabe signature fans for up to 45 guests
16. 10 units of One Bedroom Ocean Suite for 2 nights stay inclusive of the "Unlimited Privileges"
17. 9 units of One Bedroom Ocean Pool Suite for 2 nights stay inclusive of the "Unlimited Privileges"
18. Complimentary 1 unit of One Bedroom Ocean Pool Suite for 2 nights stay inclusive of the "Unlimited Privileges"
19. Upgrade into Royal Samabe Residence for Bride & Groom for 2 nights inclusive of the "Unlimited Privileges"

CONDITIONS:

1. All inclusions the above is for up to 45 persons, for additional persons, surcharge will apply.
2. "Unlimited Privileges" or "Luxury All-Inclusive" Benefits in the suites and villas are for up to 2 persons.
3. This wedding package is not valid during high season period (01 – 31 Aug 2014 & 28 Dec 2014 – 10 Jan 2015)



FACT SHEET

- MEETING AT SAMABE -

FULL DAY MEETING PACKAGE



INCLUSIONS:

- Meeting room rental
- 1x arrival fresh brewed coffee and tea
- 2x a variety of freshly brewed coffee and a wide selection of tea and special light snacks self served from the our Pantry through the meeting
- 1x set menu lunch at Rempah – Rempah Main Dining Room
- Standard meeting audio visual includes LCD projector, screen, flipchart, white board, microphone and basic sound system

HALF DAY MEETING PACKAGE



INCLUSIONS:

- Meeting room rental
- 1x arrival fresh brewed coffee and tea
- 1x a variety of freshly brewed coffee and a wide selection of tea and special light snacks self served from the our Pantry through the meeting
- 1x set menu lunch at Rempah – Rempah Main Dining Room
- Standard meeting audio visual includes LCD projector, screen, flipchart, white board, microphone and basic sound system

VENUES	TOTAL (M ²)	DIMENSION (M)	THEATER	CLASS ROOM	U-SHAPE	BOARD ROOM	COCKTAIL (STANDING)	BANQUET (SEATS)
CANANG ROOM	209	22,27 X 9,40	80	50	50	50	80	80
BANTEN ROOM	40	9,67 X 4,16	N/A	N/A	N/A	16	16	16
BANTEN'S ROOM TERRACE	49	11,34 X 4,35	N/A	N/A	N/A	N/A	20	20
PEARL CHAPEL	100	N/A	80	N/A	N/A	N/A	40	40
ROYAL SAMABE RESIDENCE	50	N/A	80	N/A	N/A	N/A	80	80
POOL SIDE	105	N/A	N/A	N/A	N/A	N/A	80	35
RING OF FIRE	14	N/A	N/A	N/A	N/A	N/A	40	40
REMPAH - REMPACH MAIN DINING ROOM	460	23 X 20	N/A	N/A	N/A	N/A	N/A	80
TE.JA.CO	156	13 X 12	N/A	N/A	N/A	N/A	80	N/A