



HOTEL FACTSHEET

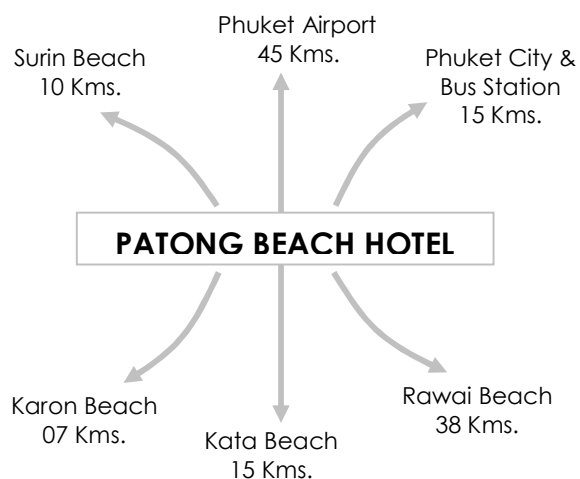
HOTEL INFORMATION :

Hotel name : Patong Beach Hotel
Category : Superior First Class 4 Star
Opening Date : May 01, 1975
Key Landmarks : Situated right in the heart of charming Patong Beach,
West Coast of Phuket Island, Thailand.

GENERAL INFORMATION :

The first hotel on the fabulous 3 km. long sparkling powdery Patong Beach, bordered by the emerald Andaman Sea, Patong Beach Hotel is proud to present excellent service, intimate privacy and charming décor, a distinct land of east and west. Perfectly in its natural setting you will be delighted with the unique elegance of this place.

ADDRESS & LOCATION :



ACCOMMODATION & ROOM FACILITIES :

245 Total Rooms

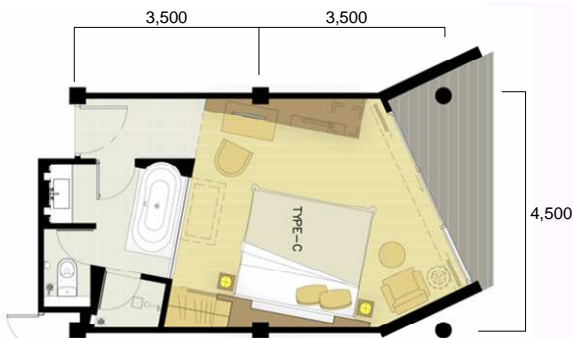
Room Type :	Total	Double	Twin	Room Size (Sqm.)	Balcony Size (Sqm.)	Room Size with Balcony (Sqm.)
Siam Wing : 3 stories (103 Rooms)						
Superior – Pool/Garden view	80	12	68	33.5	4.5	38
Deluxe – Ground floor Garden view	19	19	-	33.5	15.75	49.25
Junior suite – Garden view	4	4	-	53	17	70
Sunrise Wing : 3 stories (30 Rooms)						
Superior – Pool view	30	12	18	32	4	36
Sunset Wing : 10 stories (112 Rooms)						
Deluxe – Sea view	57	23	34	32	6	38
Deluxe – Pool view	34	10	24	32	6	38
Junior Suite – Pool / Garden view	6	1	5	40	16	56
Sunset Spa Suite - Pool view	12	4	8	36-40	16-24	56-60
Sunset Suite - Sea view	3	3	-	42	22	64

Facilities : Bath tub & shower, hot/cold water, separate bath tub, shower & toilet on deluxe rooms, balcony, air condition, IDD telephone, TV, mini bar, refrigerator, 24-hours room service, laundry service, safety box, coffee & tea set, hair dryer, slippers, bath robe & umbrellas, etc.

Electricity : 220 volts 50 Hz. (Adaptors are available on requests)
Credit Cards : American Express, Diners Club, Master Card, Visa Card, JCB.
Check in time : 14:00 p.m.
Check out time : 12:00 a.m. (noon)

ROOM PLAN

Superior Room:

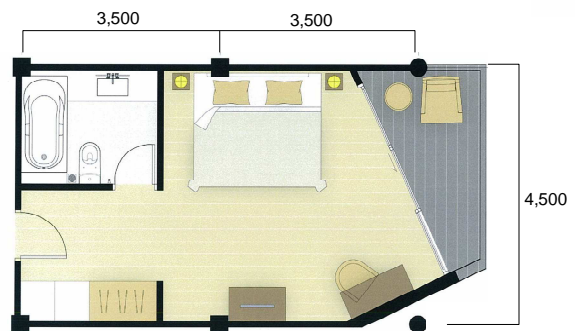


Superior Siam Wing

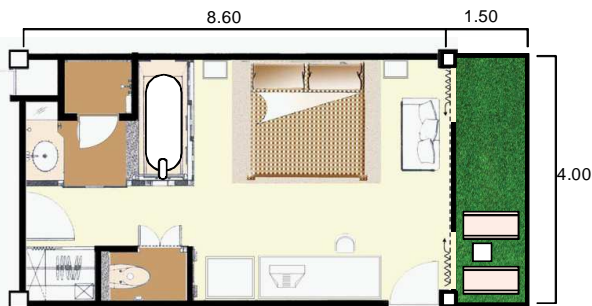
Modernity and tradition molds together in this stylistic room. Full of earth-tones and wood, which harks back to the traditional Thai home. With a view either overlooking the Siam pool as well as the cool and lush gardens below.

Superior Sunrise Wing

A surprising take on the "Thai" and modernist style, this is unlike any hotel room ever seen. The bright and warm colors of its decoration is perfect for enlightened relaxation. The room's balcony allows for a full view of the main pool, as well as the beautiful Phuket dawn.



Deluxe Room:



Deluxe Sunset Wing

Set within the 10-stories main tower, these rooms offer a breathtaking view of the Andaman sea, while some on the lower floors are well compensated with a pool view. With a four poster bed and separate bath and shower, these rooms were designed with comfort and amenities in mind. The rooms are appropriated into three different themes, encompassing the different ways of life in Thailand.

Siam Sanook

Traditional Thai crafts infused with influences from the West flourished across the kingdom during the end of the nineteenth century. Our own artful twist on this heritage is the injection of a kaleidoscope of colours and a full embrace of 'fun' in the land of Siam.

Phuket Vintage

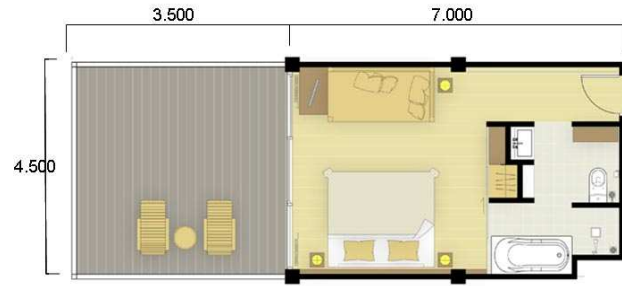
The history of old Phuket town is a mixed brew of empires, where East and West meet through the exchange of trade and goodwill. The mix of these cultures have a created a unique style, native only to Phuket, juxtaposing Europe with Oriental flavours. Opulent and clean, with a hint of nostalgia and cosmopolitanism.

Fisherman's Village

A combination of island living and vibrant colours inspires us to create the perfect room with a view. The rustic feel of reclaimed wood set against a backdrop of colours, summons up the hues of the corals and fish of the Andaman sea. The white sand beaches and the blue ocean only adds to this atmosphere of perfect beach cool.

Deluxe Siam Wing

Luxurious rooms on the ground floor of the Siam wing, with a private balcony for ambience and relaxation. Isolated and full of amenities, these rooms offer the best of modern style infused with a dose of Thai luxuries and crafts. The room offers either a double or a single bed.



Suite Room :

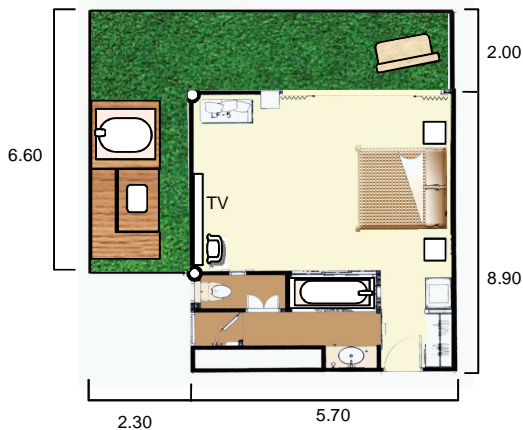
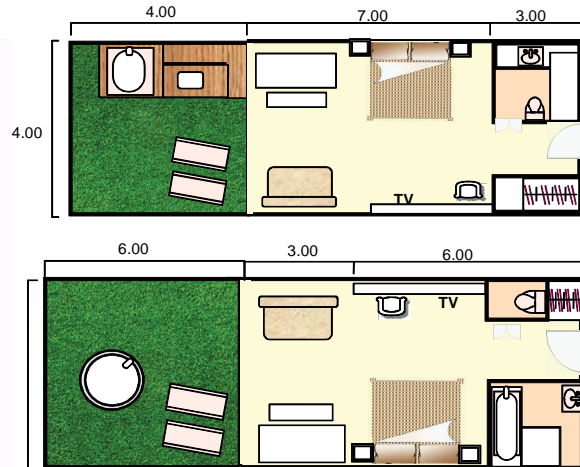


Junior Suite

Larger and more luxurious, the Junior Suite offers more space and ample room both inside and outside. Apart from the bedroom, the suite also offers a sitting room with a day bed, perfect for those lazy days away from home.

Sunset Spa Suite

Identical to the Junior Suite in all but the balcony, which not only offers more space but also contains a private outdoor Jacuzzi. This room is perfect for those seeking the ultimate luxury in a home away from home.



Sunset Suite

With a wrap-around balcony and a spectacular ocean view, this suite takes full advantage of our beachfront location. By offering the best of Patong beach in the upper floors of the main tower, the room is a must for those seeking peace and harmony between the skies and the sea.

FOOD & BEVERAGE:

Name of Restaurant	Details	Service Time	Capacity
The Andaman Coffee Shop :	An informal restaurant serving international cuisine.	(Buffet breakfast) 06:00 a.m. – 10:30 a.m. (International cuisine) 11:00 a.m. – 10:00 p.m.	160 Seats
The Deck :	Drink and Snacks while relaxing around the pool or having a meeting in the lobby.	10.00 a.m. – 10.00 p.m.	30 seats
Andaman Garden :	A Romantic dinner and special evening theme parties (subject to weather conditions)	07:00 p.m. – 10:00 p.m.	120 Seats
Papaya Thai Village	Authentic dinner with emphasize on Thai Specialties	01.00 p.m. – 10.00 p.m.	80 seats
Banana Pub :	Exotic drinks, cocktails with pool tables & live bands	05:00 p.m. – 01:00 a.m.	250 Seats
Banana discotheque :	Drink and dance with hi-tech systems	10:00 p.m. – 02:00 a.m.	800 Seats
Room Service :	All day dining with Thai & International Cuisine.	Available 24 hrs.	

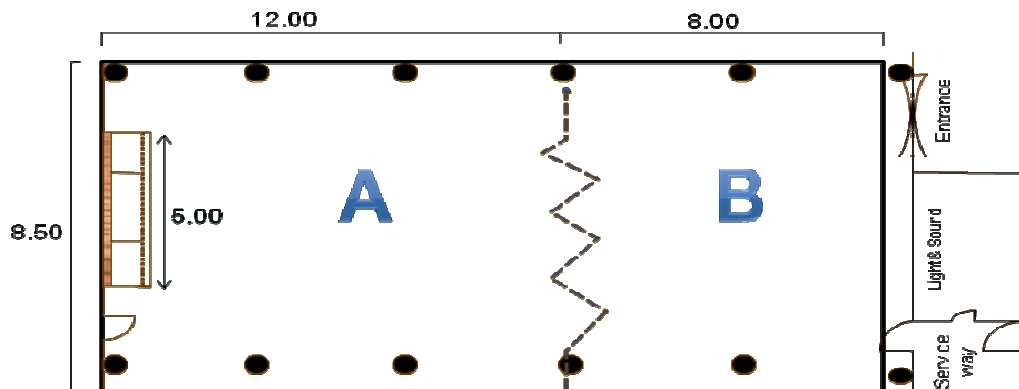
Activity :

Fruit carving, Batik painting, Thai cooking course, etc.

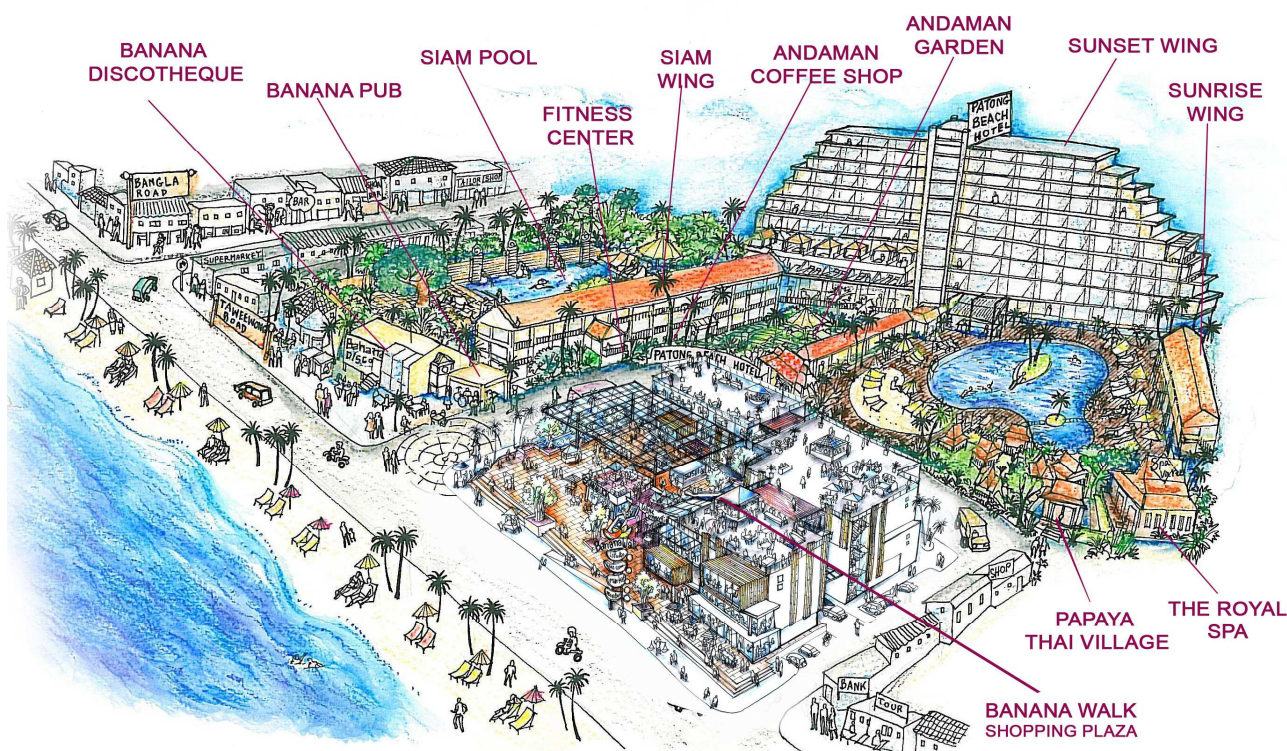
MEETING & CONFERENCE ROOM LAYOUT & CAPACITY :

Function room	Size	Ceiling height	Theatre	Class room	I shape	U shape	Cocktail	Banquet
Conference	20 x 8.5 M.	2.87 M	100	70	40	40	100	80

Conference room



Floor Plan :



GENERAL FACILITIES :

Banana Shopping Plaza, Laundry, money exchange, deposit box, two out-door swimming pools, fitness center, Children's pool, baby sitter, car rent, pool table, secretary, facsimile, internet, e-mail, photocopy, computer and printer, medical on call service, tour desk, diving shop, airline confirmation, airport transportation, mailing, newspaper, etc.

The Royal Spa :

Touch the exotic spa retreats balance your Body..Mind..Soul..
Service Time : 09.00 a.m. – 06.00 p.m.

CONTACT DETAIL :

Patong Beach Hotel :

124 Taweewongse Rd., Patong Beach, Phuket 83150, Thailand.
Tel : + 66(0) 76 340 301 – 2 / 340 304 – 6
Fax : + 66(0) 76 340 541
E-mail : patongbeach@see2sea.com

Bangkok Office :

13th Fl., Ocean Tower 1, 170/38 Ratchadapisek Rd., Klong Toey, Bangkok 10110, Thailand.
Tel : +66(0) 2 261 2986 - 9
Fax : +66(0) 2 261 2984
E-mail : sales@see2sea.com
www.see2sea.com