

***THE ICONIC MALDIVIAN  
RETREAT, REDEFINED***

**CONRAD<sup>®</sup>**

MALDIVES  
RANGALI ISLAND

ASIA EUROPE AFRICA MIDDLE EAST AMERICAS  
CONRADHOTELS.COM #STAYINSPIRED

The habitual Maldivian retreat, redefined.

# W E L C O M E T O C O N R A D M A L D I V E S R A N G A L I I S L A N D

A celebration of design and human spirit, Conrad Maldives expresses an accord of form, function and innovation in driving hospitality trends that has set the benchmark in its style. Rejecting trends in design to create a space that invites and inspires with an innovative and distinctive design that sits in perfect harmony with the natural environment.





## LOCATION

Nestled in the South Ari Atoll, renowned for its abundant flora and fauna including swimming with whale sharks and manta rays to sailing with dolphins at sunset, the resort is reached by a 30-minute picturesque seaplane flight, over the atolls.

# STAY





**NEW !  
2 - BED ROOM  
DELUXE BEACH VILLA**

Conrad Maldives Rangali Island is delighted to introduce a new and fresh 2-bedroom deluxe beach villa, located on the main island (Rangali-Finolhu).

Each villa has been architecturally designed to sit in harmony with the natural environment, senses are awakened - not overwhelmed.

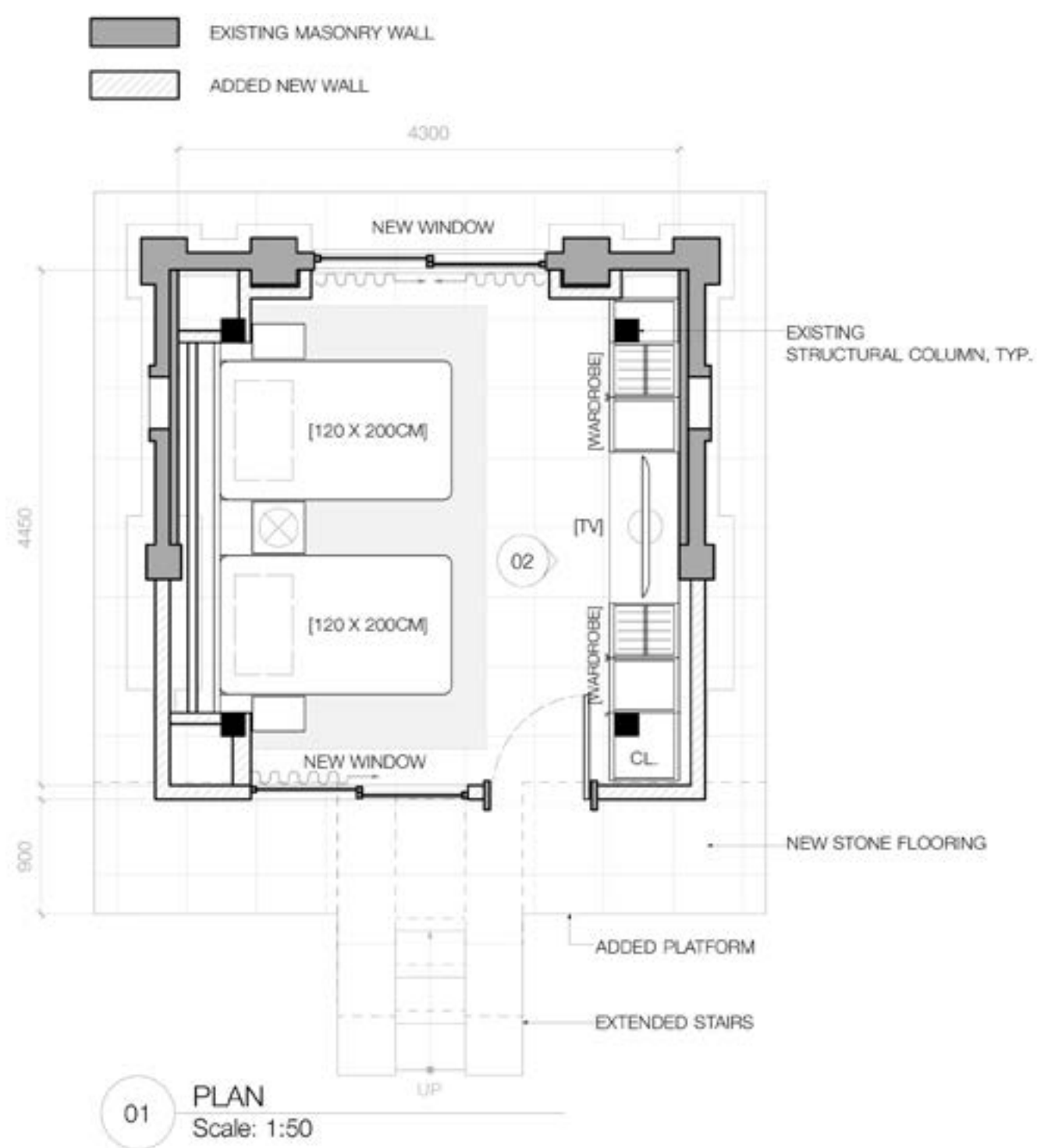
**AVAILABLE FOR  
ARRIVALS FROM**  
16 October 2019

**BOOKINGS NOW  
AVAILABLE,**  
*as per contracted rates*

## KEY FEATURES:

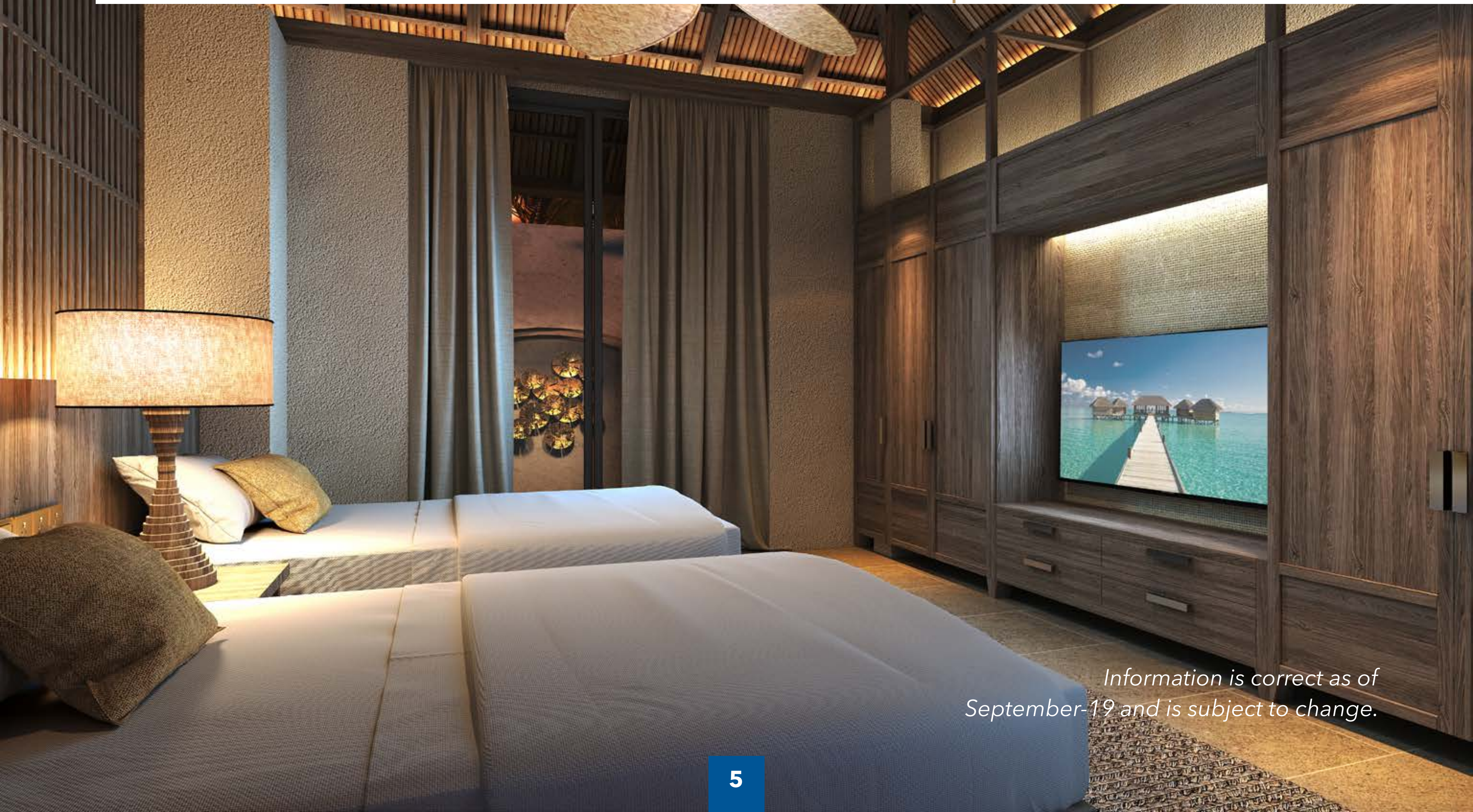
- 300sqm // 3,229sqft of space
- One king bedroom and living area
- New! A twin-bedroom that features absolute exclusivity and privacy and set amongst the tropical landscape
- Internal bathroom featuring a shower and dual vanities
- Outside private rain-shower set in the lush greenery

The villas are complete with a terrace that leads to a private pool with access to the palm fringed beach.



“

SET AMONGST THE TROPICAL FLORA AND FAUNA, THE NEW BEACH HAVENS HAVE BEEN PERFECTLY DESIGNED FOR TRAVELLING FAMILIES AND GROUPS OF FRIENDS ALIKE”



Information is correct as of September-19 and is subject to change.

“

CLEAN LINES AND NATURAL TONES ECHO THROUGHOUT THE DESIGN, THE ARCHITECTURE PAY HOMAGE TO SIMPLICITY, SPACE, HARMONY AND TIMELESSNESS.”



REFRESHED!

DELUXE BEACH VILLA

In addition, to the new 2-bedroom beach villa the resort has also refurbished its deluxe beach villas:

- 300sqm // 3,229sqft of space
- One king bedroom and living area
- Internal bathroom featuring a shower and dual vanities
- Outside private rain-shower set in the lush greenery
- A relaxation pavilion - an ideal meditative respite to relax morning, noon and night

Each villa type sleeps four persons in two (2) rooms, being an ideal choice for those travelling with children, family or friends.

AVAILABLE FOR ARRIVALS NOW

BOOKINGS NOW AVAILABLE, as per contracted rates





REDEFINED +  
RESTYLED

GRAND WATER VILLA  
WITH POOL

GRAND WATER VILLA

2 - BEDROOM  
GRAND WATER VILLA  
WITH POOL

2 - BEDROOM  
GRAND WATER VILLA

Set within The Spa Retreat, 100m // 328ft off-of-the tip of the main island, these villas offer a unique and inspired experience with the Spa Retreat and Mandhoo Restaurant close by.

AVAILABLE FOR  
ARRIVALS FROM  
22 December 2019

BOOKINGS NOW  
AVAILABLE,  
*as per contracted rates*





“

**DOTTED ABOVE THE WAVES, DISCOVER INDOOR-OUTDOOR LIVING, PRIVATE POOLS, AND SWEEPING INDIAN OCEAN VIEWS.”**



There are four villa types to choose from with all featuring:

- 150sqm //1,614sqft of space
- Four villa types to choose from, each distinctly defined:
  - Grand water villa and Grand water villa with pool both feature a living area that readily converts into a second bedroom

- 2-bedroom grand water villa - pool and 2-bedroom grand water villa both feature a twin-bedroom.
- Expansive deck that features either a pool (measured at 4.3m x 2.2m) or a Jacuzzi
- The villas are perched over the Indian Ocean with either a sunset or sunrise view

Each villa type sleeps four (4) persons in two (2) rooms, being an ideal choice for those travelling with children, family or friends.

*Information is correct as of September-19 and is subject to change.*

# PLAYY





# MAJAA EXPLORERS HUB\*

## Ethos

A celebration of the Maldives, MAJAA Explorers Hub is a space that teaches young and old about the Archipelago's abundant flora and fauna that thrives on land and sea. Through an edutaining program that nurtures discovery and conservation, MAJAA Explorers Hub aims to engage through a thoughtfully curated program presented in a matchless environment.

## Promise

Designed to make deeper connections through meaningful and memorable experiences for kids of all ages. Each touchpoint has been designed to foster open-mindedness, cultural and societal awareness, and enrich the spirit, beyond their stay at Conrad Maldives Rangali Island.

## Design

Aligned to Conrad Maldives' design ethos, MAJAA Exploration Hub takes its cues from the surrounding flora and fauna that thrives above and below the surface. MAJAA Exploration Hub aims to transform the quintessential Maldivian experience into an exploration of the Archipelago, through an inspired design and edutaining program that brings the hub to life.

“

A WORLD OF  
DISCOVERY IS  
WAITING TO  
BE EXPLORED  
THROUGH PLAY  
AND ISLAND  
ADVENTURES,  
YOUR LITTLE  
ONES WILL HAVE  
EDUTAINING FUN  
IMMERSING IN  
THE COUNTRY'S  
RICH CULTURE.”

*\*previously named Majaa kids' club*



“

BY IMMERSING KIDS WITH EDUCATIONAL EXPERIENCES, CONRAD MALDIVES AIMS TO FOSTER OPEN-MINDEDNESS, CULTURAL AWARENESS, AND SPIRIT.”

#### KEY FEATURES:

- The halo of the hub, kids' can enjoy aquatic immersion through a custom-designed splash pad and playground that takes cues from the marine life, found just moments from Rangali Island
- The splash pad and playground brings the undersea world to life through design-accents, kids' of all ages will appreciate. Accents feature motifs of dolphins and turtles to jelly fish, sharks (the friendly-kind!), seahorses and crabs. The splash pad is complete with a model seaplane - accentuating the heart of the pad
- Water games - further information
- Safety is at the heart of the hub - all water games, playground and the splash park have been designed and manufactured according to European regulations



Information is correct as of September-19 and is subject to change.

## Sustainability

Aligned to Hilton's Travel with Purpose sustainability strategy. MAJAA Exploration Hub has been designed with a respectful nod to the surrounding environment.

- The splash park game activator saves -25% in water in energy
- Water Controller features specific sequencing and scheduling
- Variable frequency drive
- Saving up to 85% in energy
- Driving up to 95% water efficiency
- LED lighting +90% energy efficiency
- Efficient pumping will be implemented to drive +78% energy and water efficiency
- 100% recycled manufacturing and onsite waste management
- Reduced carbon footprint through the utilisation of suppliers within a 60 kilometre radius

“

JOIN US ON  
OUR JOURNEY  
TOWARDS A  
GREENER FUTURE  
AS WE CELEBRATE  
OUR OCEANS AND  
NURTURE OUR  
ENDANGERED  
ENVIRONMENT.”

## Programming

The refreshed schedule will feature age appropriate programming catering from 3 to 17 years and blends discovery, adventure and how their Maldives leaning experiences can be employed at home. Key touch-points in the programming will showcase:

- Ecological explorations that showcase Conrad Maldives' commitment to conservation on land and sea
- Promotion and stewardship of the environment
- Nourish the body through green-thumb gardening, harvesting, plotting and cooking
- Soul-enriching discoveries that foster a greater understanding of the local terrain and connection to the larger eco-system



“

KNOWN FOR ITS BEACHES, LAGOONS AND VIBRANT HERITAGE, DISCOVER THE MALDIVES, AND TRAVEL WITH PURPOSE AMIDST THE TROPICAL CORAL ISLANDS.

# DISCOVER THE MALDIVES, WITH A FRESH OCEAN VIEW

Commended for its pioneering achievements, Rangali Island was the first resort to showcase water villas built on stilts above the lagoon offer undersea dining at its restaurant Ithaa. Its wine and cheese bar was a Maldivian first, and the celebrity chef restaurant Ufaa by Jereme Leung complements the other award-winning 10 restaurant and bars. Two spas, including one over the sea with glass-floored treatment rooms, offer relaxation and rejuvenation, and the rare and diverse marine wildlife on show cements Conrad Maldives Rangali Island as one of the premier island destinations worldwide.



## TWIN - PERSONALITIES

Our Maldivian playground is full of possibilities. Conrad Maldives Rangali Island is ideally designed to cater to families, groups and couples. A leading factor in the popularity of the resort is the twin-island design - with one dreamily conceived for couples and the other perfectly designed for families and groups alike.



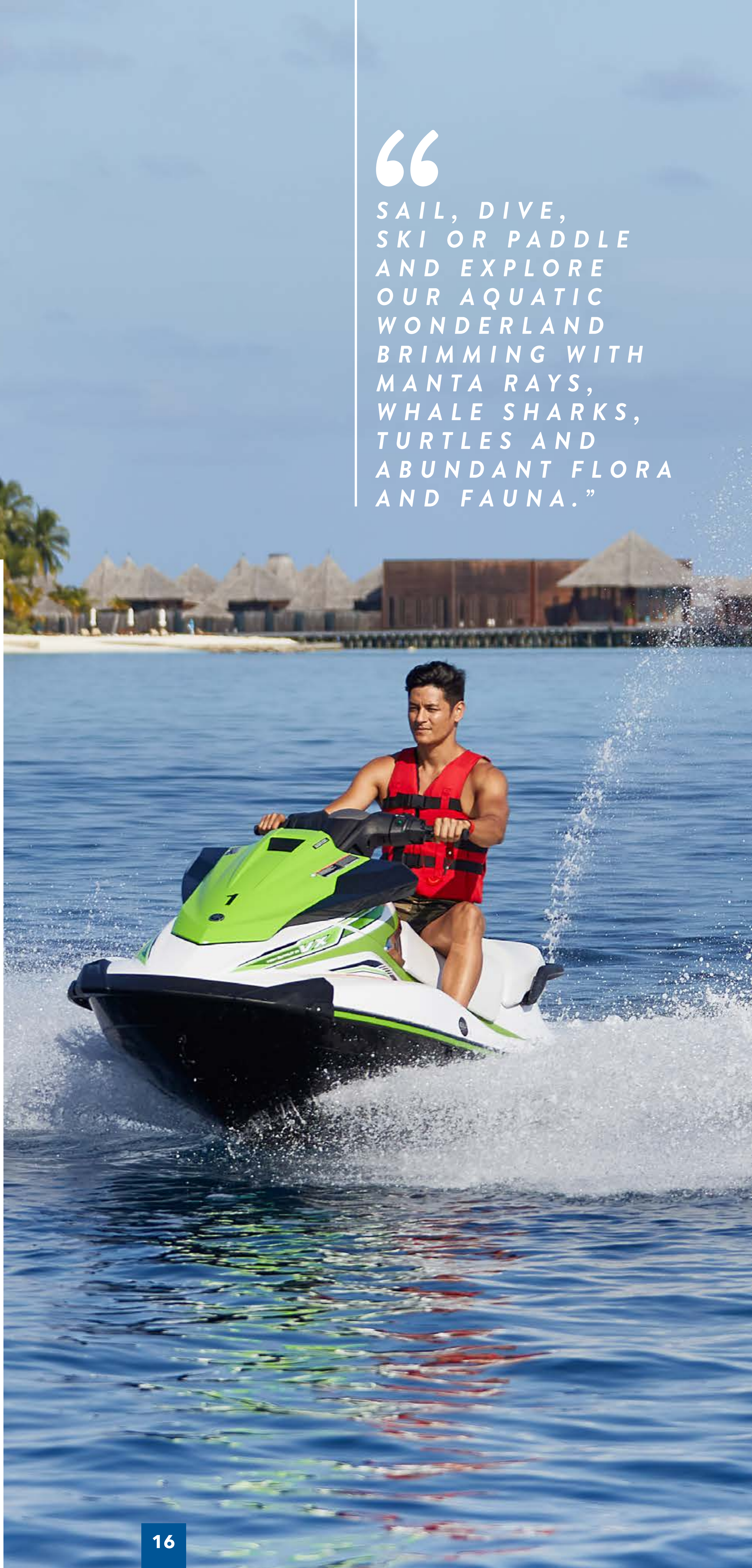
“

SAIL, DIVE,  
SKI OR PADDLE  
AND EXPLORE  
OUR AQUATIC  
WONDERLAND  
BRIMMING WITH  
MANTA RAYS,  
WHALE SHARKS,  
TURTLES AND  
ABUNDANT FLORA  
AND FAUNA.”

## RANGALI- FINOLHU ISLAND

Rangalifinolu Island (the main island) is home to some of the country's most luxurious and spacious Beach Villas. Designed to provide the ultimate in indoor-outdoor living, they are perfectly harmonized with contemporary Maldivian style. These villas combine elements of local style such as thatched roofs and abundant greenery with design that subsumes into the surrounding environment.

Being the heart of the resort, the island serves as the starting point for all thrill-seeking adventures including snorkelling and diving experiences, cultural explorations and evening cruises. Additionally, the island features the soon-to-be launched MAJAA Exploration Hub and main infinity pool complete with a children's pool, redeveloped beach villas and suites, and a number of the resort's iconic restaurants, including Ithaa the world's first undersea restaurant.



## RANGALI ISLAND

Conrad Maldives Rangali Island was the first resort in the country to develop sustainable water villas, set on stilts over the Indian Ocean. Luxuriate in the archetypal Maldivian hideaway on Rangali Island whilst also having access to the amenities of the larger and livelier Rangali-Finolhu Island, which is linked by a 500m bridge and where you can spot Manta Rays dancing at night.

Each villa features indoor-outdoor living that's been designed to blend effortlessly with the

environment. Discover villas featuring either plunge-pools or Jacuzzi's with stairs leading into the Indian Ocean.

Rangali Island features a selection of award-winning restaurants including the Maldives' first purposely-designed wine cellar, built 2m underground and features bespoke degustation dinners and old and new wines from around the world. The island is complete with an adults-only respite - The Quiet Zone infinity pool and bar.

“

PIQUE  
CURIOSITY WITH  
AWARD-WINNING  
DINING ABOVE  
& BELOW THE  
WATER, AND  
CULTURAL  
CONNECTIONS  
THAT SPARK THE  
IMAGINATION.”



## C O N T A C T

For further information and reservation enquiries, please contact

Conrad Maldives Rangali Island

T: +960 668 0629

E: [mlehi.maldives@conradhotels.com](mailto:mlehi.maldives@conradhotels.com)

W. [www.conradmaldives.com](http://www.conradmaldives.com)

Instagram [@conrad\\_maldives](https://www.instagram.com/conrad_maldives) #ConradMaldives #TheMuraka

Facebook [@conradmaldivesrangaliisland](https://www.facebook.com/conradmaldivesrangaliisland) #ConradMaldives #TheMuraka

YouTube

*All information is correct as of November-2019 and is subject to change*